

Anti-LAMC1 antibody (1420-1500 C-Term) (STJ93896)

STJ93896

GENERAL INFORMATION

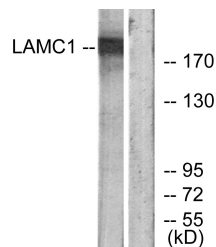
Product Type	Primary antibodies
Short Description	Rabbit polyclonal antibody anti-Laminin Subunit Gamma-1 (1420-1500 C-Term) is suitable for use in Western Blot, Immunohistochemistry, Immunofluorescence, Immunocytochemistry and ELISA research applications.
Applications	WB, IHC-P, IF, ICC, ELISA
Host/Source	Rabbit
Reactivity	Human, Mouse, Rat, Monkey

PRODUCT PROPERTIES

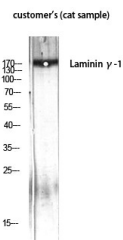
Clonality	Polyclonal
Clone ID	
Concentration	1 mg/mL
Conjugation	Unconjugated
Purification	The antibody was affinity-purified from rabbit anti-serum by affinity-chromatography.
Dilution Range	WB 1:500-1:2000 IHC 1:100-1:300 IF 1:200-1:1000 ELISA 1:40000
Formulation	PBS, 50% Glycerol, 0.5% BSA and 0.02% Sodium Azide.
Isotype	IgG
Storage Instruction	Store at -20°C for up to 1 year from the date of receipt, and avoid repeat freeze-thaw cycles.

TARGET INFORMATION

Gene ID	3915
Gene Symbol	LAMC1
Uniprot ID	LAMC1_HUMAN
Immunogen	The antiserum was produced against synthesized peptide derived from human LAMC1 at amino acid range 1451-1500
Immunogen Region	1420-1500 C-Term
Specificity	LAMC1 polyclonal antibody (Laminin Subunit Gamma-1) binds to endogenous Laminin Subunit Gamma-1 at the amino acid region 1420-1500 C-Term.
Immunogen Sequence	



Western blot analysis of lysates from HUVEC cells, using LAMC1 Antibody. The lane on the right is blocked with the synthesized peptide.



Western blot analysis of customer's (cat sample) using Laminin Gamma-1 Polyclonal Antibody diluted at 1:1000

This product is suitable for in-vitro studies under the RESEARCH USE ONLY [RUO] licence. This product must not be used as for diagnostic or other medical purposes.
St John's Laboratory Ltd, Knowledge Dock Business Centre, University Way, London, E16 2RD | Tel: 0208 223 3081