

## Anti-IGLL1 antibody (130-210 C-Term) (STJ93884)

STJ93884

### GENERAL INFORMATION

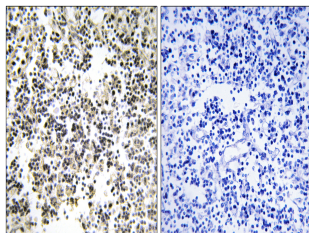
<b>Product Type</b>	Primary antibodies
<b>Short Description</b>	Rabbit polyclonal antibody anti-Immunoglobulin Lambda-Like Polypeptide 1 (130-210 C-Term) is suitable for use in Immunohistochemistry, Immunofluorescence, Western Blot and ELISA research applications.
<b>Applications</b>	IHC-P, IF-P, WB, ELISA
<b>Host/Source</b>	Rabbit
<b>Reactivity</b>	Human, Rat, Mouse

### PRODUCT PROPERTIES

<b>Clonality</b>	Polyclonal
<b>Clone ID</b>	
<b>Concentration</b>	1 mg/mL
<b>Conjugation</b>	Unconjugated
<b>Purification</b>	The antibody was affinity-purified from rabbit anti-serum by affinity-chromatography.
<b>Dilution</b>	WB 1:500-2000
<b>Range</b>	IHC 1:100-1:300 ELISA 1:40000
<b>Formulation</b>	PBS, 50% Glycerol, 0.5% BSA and 0.02% Sodium Azide.
<b>Isotype</b>	IgG
<b>Storage Instruction</b>	Store at -20°C for up to 1 year from the date of receipt, and avoid repeat freeze-thaw cycles.

### TARGET INFORMATION

<b>Gene ID</b>	3543
<b>Gene Symbol</b>	IGLL1
<b>Uniprot ID</b>	IGLL1_HUMAN
<b>Immunogen</b>	The antiserum was produced against synthesized peptide derived from human IGLL1 at amino acid range 161-210
<b>Immunogen Region</b>	130-210 C-Term
<b>Specificity</b>	IGLL1 polyclonal antibody (Immunoglobulin Lambda-Like Polypeptide 1) binds to endogenous Immunoglobulin Lambda-Like Polypeptide 1 at the amino acid region 130-210 C-Term.
<b>Immunogen Sequence</b>	



Immunohistochemistry analysis of paraffin-embedded human lymph node, using IGLL1 Antibody. The picture on the right is blocked with the synthesized peptide.