

## Anti-SH2D2A antibody (180-260 Internal) (STJ93883)

STJ93883

### GENERAL INFORMATION

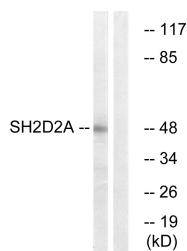
<b>Product Type</b>	Primary antibodies
<b>Short Description</b>	Rabbit polyclonal antibody anti-Sh2 Domain-Containing Protein 2a (180-260 Internal) is suitable for use in Western Blot, Immunohistochemistry, Immunofluorescence and ELISA research applications.
<b>Applications</b>	WB, IHC-P, IF-P, ELISA
<b>Host/Source</b>	Rabbit
<b>Reactivity</b>	Human, Rat, Mouse

### PRODUCT PROPERTIES

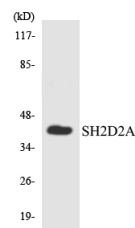
<b>Clonality</b>	Polyclonal
<b>Clone ID</b>	
<b>Concentration</b>	1 mg/mL
<b>Conjugation</b>	Unconjugated
<b>Purification</b>	The antibody was affinity-purified from rabbit anti-serum by affinity-chromatography.
<b>Dilution Range</b>	WB 1:500-1:2000 IHC 1:100-1:300 ELISA 1:10000
<b>Formulation</b>	PBS, 50% Glycerol, 0.5% BSA and 0.02% Sodium Azide.
<b>Isotype</b>	IgG
<b>Storage Instruction</b>	Store at 20°C for up to 1 year from the date of receipt, and avoid repeat freeze-thaw cycles.

### TARGET INFORMATION

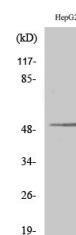
<b>Gene ID</b>	9047
<b>Gene Symbol</b>	SH2D2A
<b>Uniprot ID</b>	SH22A_HUMAN
<b>Immunogen</b>	The antiserum was produced against synthesized peptide derived from human SH2D2A at amino acid range 211-260
<b>Immunogen Region</b>	180-260 Internal
<b>Specificity</b>	SH2D2A polyclonal antibody (Sh2 Domain-Containing Protein 2a) binds to endogenous Sh2 Domain-Containing Protein 2a at the amino acid region 180-260 Internal.
<b>Immunogen Sequence</b>	



Western blot analysis of lysates from HepG2 cells, using SH2D2A Antibody. The lane on the right is blocked with the synthesized peptide.



Western blot analysis of the lysates from HUVEC cells using SH2D2A antibody.



Western blot analysis of various cells using Lad Polyclonal Antibody.

This product is suitable for in-vitro studies under the RESEARCH USE ONLY [RUO] licence. This product must not be used as for diagnostic or other medical purposes.  
St John's Laboratory Ltd, Knowledge Dock Business Centre, University Way, London, E16 2RD | Tel: 0208 223 3081