

Anti-KCNS2 antibody (170-250 Internal) (STJ93881)

STJ93881

GENERAL INFORMATION

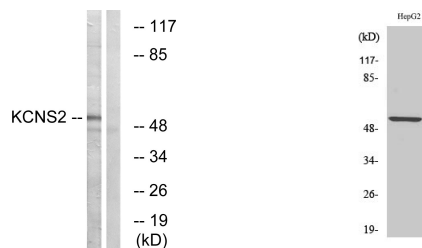
Product Type	Primary antibodies
Short Description	Rabbit polyclonal antibody anti-Potassium Voltage-Gated Channel Subfamily S Member 2 (170-250 Internal) is suitable for use in Western Blot and ELISA research applications.
Applications	WB, ELISA
Host/Source	Rabbit
Reactivity	Human, Mouse, Rat

PRODUCT PROPERTIES

Clonality	Polyclonal
Clone ID	
Concentration	1 mg/mL
Conjugation	Unconjugated
Purification	The antibody was affinity-purified from rabbit anti-serum by affinity-chromatography.
Dilution	WB 1:500-1:2000
Range	ELISA 1:40000
Formulation	PBS, 50% Glycerol, 0.5% BSA and 0.02% Sodium Azide.
Isotype	IgG
Storage	Store at -20°C for up to 1 year from the date of receipt, and avoid repeat freeze-thaw cycles.
Instruction	

TARGET INFORMATION

Gene ID	3788
Gene Symbol	KCNS2
Uniprot ID	KCNS2_HUMAN
Immunogen	The antiserum was produced against synthesized peptide derived from human KCNS2 at amino acid range 197-246
Immunogen Region	170-250 Internal
Specificity	KCNS2 polyclonal antibody (Potassium Voltage-Gated Channel Subfamily S Member 2) binds to endogenous Potassium Voltage-Gated Channel Subfamily S Member 2 at the amino acid region 170-250 Internal.
Immunogen Sequence	



Western blot analysis of lysates from HepG2 cells, using KCNS2 Antibody. The lane on the right is blocked with the synthesized peptide.

Western blot analysis of various cells using KV9.2 Polyclonal Antibody