

Anti-KCND2 antibody (560-640) (STJ93879)

STJ93879

GENERAL INFORMATION

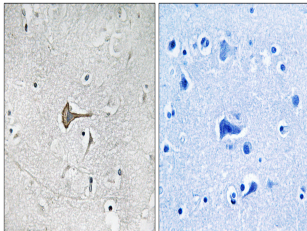
Product Type	Primary antibodies
Short Description	Rabbit polyclonal antibody anti-Potassium Voltage-Gated Channel Subfamily D Member 2 (560-640) is suitable for use in Immunohistochemistry, Immunofluorescence and ELISA research applications.
Applications	IHC-P, IF-P, ELISA
Host/Source	Rabbit
Reactivity	Human, Mouse, Rat

PRODUCT PROPERTIES

Clonality	Polyclonal
Clone ID	
Concentration	1 mg/mL
Conjugation	Unconjugated
Purification	The antibody was affinity-purified from rabbit anti-serum by affinity-chromatography.
Dilution	IHC 1:100-1:300
Range	ELISA 1:10000
Formulation	PBS, 50% Glycerol, 0.5% BSA and 0.02% Sodium Azide.
Isotype	IgG
Storage	Store at -20°C for up to 1 year from the date of receipt, and avoid repeat freeze-thaw cycles.
Instruction	

TARGET INFORMATION

Gene ID	3751
Gene Symbol	KCND2
Uniprot ID	KCND2_HUMAN
Immunogen	The antiserum was produced against synthesized peptide derived from human Kv4.2/KCND2 at amino acid range 581-630
Immunogen Region	560-640
Specificity	KCND2 polyclonal antibody (Potassium Voltage-Gated Channel Subfamily D Member 2) binds to endogenous Potassium Voltage-Gated Channel Subfamily D Member 2 at the amino acid region 560-640.
Immunogen Sequence	



Immunohistochemistry analysis of paraffin-embedded human brain tissue, using Kv4.2/KCND2 Antibody. The picture on the right is blocked with the synthesized peptide.