

Anti-KCND1 antibody (530-610 C-Term) (STJ93878)

STJ93878

GENERAL INFORMATION

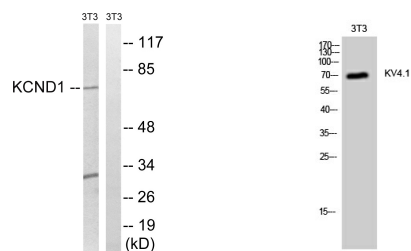
Product Type	Primary antibodies
Short Description	Rabbit polyclonal antibody anti-Potassium Voltage-Gated Channel Subfamily D Member 1 (530-610 C-Term) is suitable for use in Western Blot, Immunohistochemistry, Immunofluorescence and ELISA research applications.
Applications	WB, IHC-P, IF-P, ELISA
Host/Source	Rabbit
Reactivity	Human, Mouse

PRODUCT PROPERTIES

Clonality	Polyclonal
Clone ID	
Concentration	1 mg/mL
Conjugation	Unconjugated
Purification	The antibody was affinity-purified from rabbit anti-serum by affinity-chromatography.
Dilution Range	WB 1:500-1:2000 IHC 1:100-1:300 ELISA 1:20000
Formulation	PBS, 50% Glycerol, 0.5% BSA and 0.02% Sodium Azide.
Isotype	IgG
Storage Instruction	Store at -20°C for up to 1 year from the date of receipt, and avoid repeat freeze-thaw cycles.

TARGET INFORMATION

Gene ID	3750
Gene Symbol	KCND1
Uniprot ID	KCND1_HUMAN
Immunogen Region	The antiserum was produced against synthesized peptide derived from human KCND1 at amino acid range 558-607
Immunogen Region	530-610 C-Term
Specificity	KCND1 polyclonal antibody (Potassium Voltage-Gated Channel Subfamily D Member 1) binds to endogenous Potassium Voltage-Gated Channel Subfamily D Member 1 at the amino acid region 530-610 C-Term.
Immunogen Sequence	



Western blot analysis of lysates from NIH/3T3 cells, using KCND1 Antibody. The lane on the right is blocked with the synthesized peptide.

Western blot analysis of 3T3 cells using KV4.1 Polyclonal Antibody

This product is suitable for in-vitro studies under the RESEARCH USE ONLY [RUO] licence. This product must not be used as for diagnostic or other medical purposes.
St John's Laboratory Ltd, Knowledge Dock Business Centre, University Way, London, E16 2RD | Tel: 0208 223 3081