

Anti-KCNC2 antibody (560-640 C-Term) (STJ93876)

STJ93876

GENERAL INFORMATION

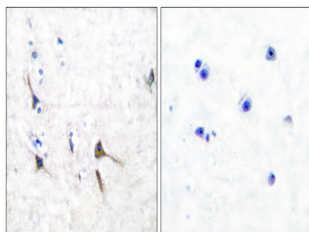
Product Type	Primary antibodies
Short Description	Rabbit polyclonal antibody anti-Potassium Voltage-Gated Channel Subfamily C Member 2 (560-640 C-Term) is suitable for use in Western Blot, Immunohistochemistry, Immunofluorescence and ELISA research applications.
Applications	WB, IHC-P, IF-P, ELISA
Host/Source	Rabbit
Reactivity	Human, Mouse, Rat

PRODUCT PROPERTIES

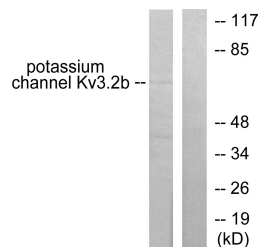
Clonality	Polyclonal
Clone ID	
Concentration	1 mg/mL
Conjugation	Unconjugated
Purification	The antibody was affinity-purified from rabbit anti-serum by affinity-chromatography.
Dilution Range	WB 1:500-1:2000 IHC 1:100-1:300 ELISA 1:10000
Formulation	PBS, 50% Glycerol, 0.5% BSA and 0.02% Sodium Azide.
Isotype	IgG
Storage Instruction	Store at -20°C for up to 1 year from the date of receipt, and avoid repeat freeze-thaw cycles.

TARGET INFORMATION

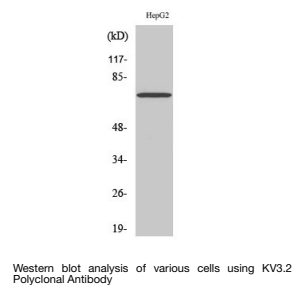
Gene ID	3747
Gene Symbol	KCNC2
Uniprot ID	KCNC2_HUMAN
Immunogen	The antiserum was produced against synthesized peptide derived from human Potassium Channel Kv3.2b at amino acid range 589-638
Immunogen Region	560-640 C-Term
Specificity	KCNC2 polyclonal antibody (Potassium Voltage-Gated Channel Subfamily C Member 2) binds to endogenous Potassium Voltage-Gated Channel Subfamily C Member 2 at the amino acid region 560-640 C-Term.
Immunogen Sequence	



Immunohistochemistry analysis of paraffin-embedded human brain tissue, using Potassium Channel Kv3.2b Antibody. The picture on the right is blocked with the synthesized peptide.



Western blot analysis of lysates from HepG2 cells, using Potassium Channel Kv3.2b Antibody. The lane on the right is blocked with the synthesized peptide.



Western blot analysis of various cells using Kv3.2 Polyclonal Antibody

This product is suitable for in-vitro studies under the RESEARCH USE ONLY [RUO] licence. This product must not be used as for diagnostic or other medical purposes.
St John's Laboratory Ltd, Knowledge Dock Business Centre, University Way, London, E16 2RD | Tel: 0208 223 3081