

Anti-KCNA5 antibody (230-310 Internal) (STJ93872)

STJ93872

GENERAL INFORMATION

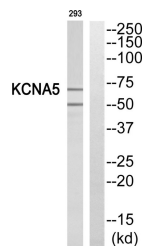
Product Type	Primary antibodies
Short Description	Rabbit polyclonal antibody anti-Potassium Voltage-Gated Channel Subfamily A Member 5 (230-310 Internal) is suitable for use in Western Blot and ELISA research applications.
Applications	WB, ELISA
Host/Source	Rabbit
Reactivity	Human, Mouse, Rat

PRODUCT PROPERTIES

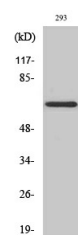
Clonality	Polyclonal
Clone ID	
Concentration	1 mg/mL
Conjugation	Unconjugated
Purification	The antibody was affinity-purified from rabbit anti-serum by affinity-chromatography.
Dilution	WB 1:500-1:2000
Range	ELISA 1:40000
Formulation	PBS, 50% Glycerol, 0.5% BSA and 0.02% Sodium Azide.
Isotype	IgG
Storage	Store at -20°C for up to 1 year from the date of receipt, and avoid repeat freeze-thaw cycles.
Instruction	

TARGET INFORMATION

Gene ID	3741
Gene Symbol	KCNA5
Uniprot ID	KCNA5_HUMAN
Immunogen	The antiserum was produced against synthesized peptide derived from human KCNA5 at amino acid range 253-302
Immunogen Region	230-310 Internal
Specificity	KCNA5 polyclonal antibody (Potassium Voltage-Gated Channel Subfamily A Member 5) binds to endogenous Potassium Voltage-Gated Channel Subfamily A Member 5 at the amino acid region 230-310 Internal.
Immunogen Sequence	



Western blot analysis of KCNA5 Antibody. The lane on the right is blocked with the KCNA5 peptide.



Western blot analysis of various cells using KV1.5 Polyclonal Antibody diluted at 1: 500

This product is suitable for in-vitro studies under the RESEARCH USE ONLY [RUO] licence. This product must not be used as for diagnostic or other medical purposes.
 St John's Laboratory Ltd, Knowledge Dock Business Centre, University Way, London, E16 2RD | Tel: 0208 223 3081