

Anti-XRCC5 antibody (660-740 C-Term) (STJ93866)

STJ93866

GENERAL INFORMATION

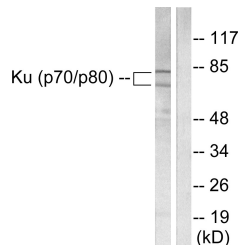
Product Type	Primary antibodies
Short Description	Rabbit polyclonal antibody anti-X-Ray Repair Cross-Complementing Protein 5 (660-740 C-Term) is suitable for use in Western Blot, Immunohistochemistry, Immunofluorescence, Immunocytochemistry and ELISA research applications.
Applications	WB, IHC-P, IF, ICC, ELISA
Host/Source	Rabbit
Reactivity	Human, Monkey

PRODUCT PROPERTIES

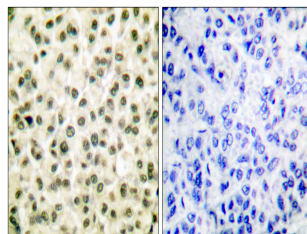
Clonality	Polyclonal
Clone ID	
Concentration	1 mg/mL
Conjugation	Unconjugated
Purification	The antibody was affinity-purified from rabbit anti-serum by affinity-chromatography.
Dilution Range	WB 1:500-1:2000 IHC 1:100-1:300 IF 1:200-1:1000 ELISA 1:20000
Formulation	PBS, 50% Glycerol, 0.5% BSA and 0.02% Sodium Azide.
Isotype	IgG
Storage Instruction	Store at -20°C for up to 1 year from the date of receipt, and avoid repeat freeze-thaw cycles.

TARGET INFORMATION

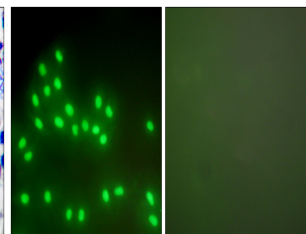
Gene ID	7520
Gene Symbol	XRCC5
Uniprot ID	XRCC5_HUMAN
Immunogen	The antiserum was produced against synthesized peptide derived from human Ku70/80 at amino acid range 683-732
Immunogen Region	660-740 C-Term
Specificity	XRCC5 polyclonal antibody (X-Ray Repair Cross-Complementing Protein 5) binds to endogenous X-Ray Repair Cross-Complementing Protein 5 at the amino acid region 660-740 C-Term.
Immunogen Sequence	



Western blot analysis of lysates from LOVO cells, using Ku70/80 Antibody. The lane on the right is blocked with the synthesized peptide.



Immunohistochemistry analysis of paraffin-embedded human breast carcinoma tissue, using Ku70/80 Antibody. The picture on the right is blocked with the synthesized peptide.



Immunofluorescence analysis of A549 cells, using Ku70/80 Antibody. The picture on the right is blocked with the synthesized peptide.



Western blot analysis of COS7 cells using Ku-80 Polyclonal Antibody.

This product is suitable for in-vitro studies under the RESEARCH USE ONLY [RUO] licence. This product must not be used as for diagnostic or other medical purposes.
St John's Laboratory Ltd, Knowledge Dock Business Centre, University Way, London, E16 2RD | Tel: 0208 223 3081