

Anti-Krs-1/2 antibody (120-200) (STJ93860)

STJ93860

GENERAL INFORMATION

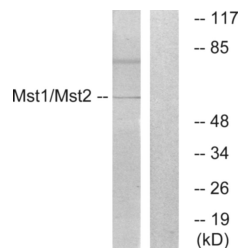
Product Type	Primary antibodies
Short Description	Rabbit polyclonal antibody anti-Serine/threonine-protein kinase 3 and Serine/threonine-protein kinase 4 (120-200) is suitable for use in Western Blot, Immunohistochemistry, Immunofluorescence and ELISA research applications.
Applications	WB, IHC-P, IF-P, ELISA
Host/Source	Rabbit
Reactivity	Human, Mouse

PRODUCT PROPERTIES

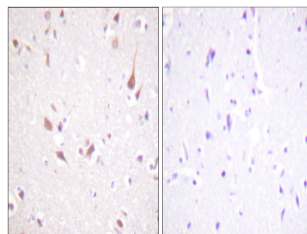
Clonality	Polyclonal
Clone ID	
Concentration	1 mg/mL
Conjugation	Unconjugated
Purification	The antibody was affinity-purified from rabbit anti-serum by affinity-chromatography.
Dilution Range	WB 1:500-1:2000 IHC 1:100-1:300 ELISA 1:5000
Formulation	PBS, 50% Glycerol, 0.5% BSA and 0.02% Sodium Azide.
Isotype	IgG
Storage Instruction	Store at -20°C for up to 1 year from the date of receipt, and avoid repeat freeze-thaw cycles.

TARGET INFORMATION

Gene ID	6788 6789
Gene Symbol	STK3 STK4
Uniprot ID	STK3_HUMAN STK4_HUMAN
Immunogen	The antiserum was produced against synthesized peptide derived from human Mst1/2 at amino acid range 149-198
Immunogen Region	120-200
Specificity	Krs-1/2 polyclonal antibody (Serine/threonine-protein kinase 3 and Serine/threonine-protein kinase 4) binds to endogenous Serine/threonine-protein kinase 3 and Serine/threonine-protein kinase 4 at the amino acid region 120-200.
Immunogen Sequence	



Western blot analysis of lysates from HeLa cells, treated with UV 15', using Mst1/2 Antibody. The lane on the right is blocked with the synthesized peptide.



Immunohistochemistry analysis of paraffin-embedded human brain tissue, using Mst1/2 Antibody. The picture on the right is blocked with the synthesized peptide.

This product is suitable for in-vitro studies under the RESEARCH USE ONLY [RUO] licence. This product must not be used as for diagnostic or other medical purposes.
St John's Laboratory Ltd, Knowledge Dock Business Centre, University Way, London, E16 2RD | Tel: 0208 223 3081