

Anti-SUV39H2 antibody (80-160 Internal) (STJ93852)

STJ93852

GENERAL INFORMATION

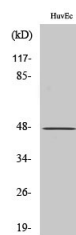
Product Type	Primary antibodies
Short Description	Rabbit polyclonal antibody anti-Histone-Lysine N-Methyltransferase Suv39h2 (80-160 Internal) is suitable for use in Western Blot and ELISA research applications.
Applications	WB, ELISA
Host/Source	Rabbit
Reactivity	Human, Mouse

PRODUCT PROPERTIES

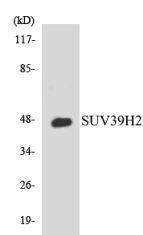
Clonality	Polyclonal
Clone ID	
Concentration	1 mg/mL
Conjugation	Unconjugated
Purification	The antibody was affinity-purified from rabbit anti-serum by affinity-chromatography.
Dilution Range	WB 1:500-1:2000 ELISA 1:40000
Formulation	PBS, 50% Glycerol, 0.5% BSA and 0.02% Sodium Azide.
Isotype	IgG
Storage	Store at -20°C for up to 1 year from the date of receipt, and avoid repeat freeze-thaw cycles.
Instruction	

TARGET INFORMATION

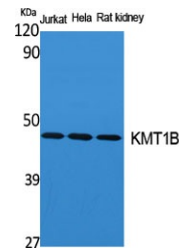
Gene ID	79723
Gene Symbol	SUV39H2
Uniprot ID	SUV92_HUMAN
Immunogen	The antiserum was produced against synthesized peptide derived from human SUV39H2 at amino acid range 111-160
Immunogen Region	80-160 Internal
Specificity	SUV39H2 polyclonal antibody (Histone-Lysine N-Methyltransferase Suv39h2) binds to endogenous Histone-Lysine N-Methyltransferase Suv39h2 at the amino acid region 80-160 Internal.
Immunogen Sequence	



Western blot analysis of COLO205 cells using KMT1B Polyclonal Antibody cells nucleus extracted by Minute™ Cytoplasmic and Nuclear Fractionation kit (SC-003, Inventibiotech, MN, USA).



Western blot analysis of the lysates from 293 cells using SUV39H2 antibody.



Western blot analysis of various cells using KMT1B Polyclonal Antibody cells nucleus extracted by Minute™ Cytoplasmic and Nuclear Fractionation kit (SC-003, Inventibiotech, MN, USA).

This product is suitable for in-vitro studies under the RESEARCH USE ONLY [RUO] licence. This product must not be used as for diagnostic or other medical purposes.
St John's Laboratory Ltd, Knowledge Dock Business Centre, University Way, London, E16 2RD | Tel: 0208 223 3081