

Anti-KLHL3 antibody (10-90 N-Term) (STJ93851)

STJ93851

GENERAL INFORMATION

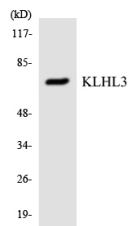
Product Type	Primary antibodies
Short Description	Rabbit polyclonal antibody anti-Kelch-Like Protein 3 (10-90 N-Term) is suitable for use in Western Blot, Immunohistochemistry, Immunofluorescence, Immunocytochemistry and ELISA research applications.
Applications	WB, IHC-P, IF, ICC, ELISA
Host/Source	Rabbit
Reactivity	Human, Rat, Mouse

PRODUCT PROPERTIES

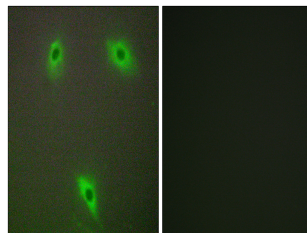
Clonality	Polyclonal
Clone ID	
Concentration	1 mg/mL
Conjugation	Unconjugated
Purification	The antibody was affinity-purified from rabbit anti-serum by affinity-chromatography.
Dilution Range	WB 1:500-1:2000 IHC 1:100-1:300 IF 1:200-1:1000 ELISA 1:20000
Formulation	PBS, 50% Glycerol, 0.5% BSA and 0.02% Sodium Azide.
Isotype	IgG
Storage Instruction	Store at -20°C for up to 1 year from the date of receipt, and avoid repeat freeze-thaw cycles.

TARGET INFORMATION

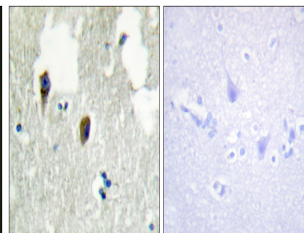
Gene ID	26249
Gene Symbol	KLHL3
Uniprot ID	KLHL3_HUMAN
Immunogen	The antiserum was produced against synthesized peptide derived from human KLHL3 at amino acid range 10-59
Immunogen Region	10-90 N-Term
Specificity	KLHL3 polyclonal antibody (Kelch-Like Protein 3) binds to endogenous Kelch-Like Protein 3 at the amino acid region 10-90 N-Term.
Immunogen Sequence	



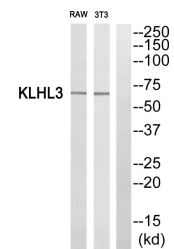
Western blot analysis of the lysates from COLO205 cells using KLHL3 antibody.



Immunofluorescence analysis of A549 cells, using KLHL3 Antibody. The picture on the right is blocked with the synthesized peptide.



Immunohistochemistry analysis of paraffin-embedded human brain tissue, using KLHL3 Antibody. The picture on the right is blocked with the synthesized peptide.



Western blot analysis of KLHL3 Antibody. The lane on the right is blocked with the KLHL3 peptide.