

Anti-CDKL2 antibody (180-260 Internal) (STJ93847)

STJ93847

GENERAL INFORMATION

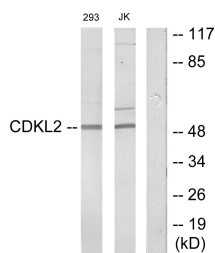
Product Type	Primary antibodies
Short Description	Rabbit polyclonal antibody anti-Cyclin-Dependent Kinase-Like 2 (180-260 Internal) is suitable for use in Western Blot, Immunohistochemistry, Immunofluorescence and ELISA research applications.
Applications	WB, IHC-P, IF-P, ELISA
Host/Source	Rabbit
Reactivity	Human, Rat, Mouse

PRODUCT PROPERTIES

Clonality	Polyclonal
Clone ID	
Concentration	1 mg/mL
Conjugation	Unconjugated
Purification	The antibody was affinity-purified from rabbit anti-serum by affinity-chromatography.
Dilution Range	WB 1:500-1:2000 IHC 1:100-1:300 ELISA 1:10000
Formulation	PBS, 50% Glycerol, 0.5% BSA and 0.02% Sodium Azide.
Isotype	IgG
Storage Instruction	Store at -20°C for up to 1 year from the date of receipt, and avoid repeat freeze-thaw cycles.

TARGET INFORMATION

Gene ID	8999
Gene Symbol	CDKL2
Uniprot ID	CDKL2_HUMAN
Immunogen	The antiserum was produced against synthesized peptide derived from human CDKL2 at amino acid range 211-260
Immunogen Region	180-260 Internal
Specificity	CDKL2 polyclonal antibody (Cyclin-Dependent Kinase-Like 2) binds to endogenous Cyclin-Dependent Kinase-Like 2 at the amino acid region 180-260 Internal.
Immunogen Sequence	



Western blot analysis of lysates from Jurkat and 293 cells, using CDKL2 Antibody. The lane on the right is blocked with the synthesized peptide.