

Anti-KCNJ5 antibody (340-420 C-Term) (STJ93842)

STJ93842

GENERAL INFORMATION

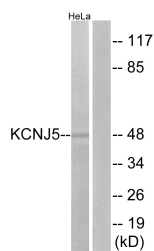
Product Type	Primary antibodies
Short Description	Rabbit polyclonal antibody anti-G Protein-Activated Inward Rectifier Potassium Channel 4 (340-420 C-Term) is suitable for use in Western Blot, Immunofluorescence, Immunocytochemistry and ELISA research applications.
Applications	WB, IF, ICC, ELISA
Host/Source	Rabbit
Reactivity	Human, Rat, Mouse

PRODUCT PROPERTIES

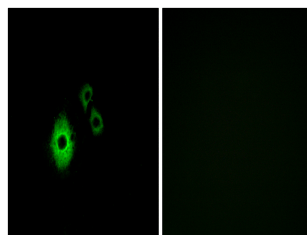
Clonality	Polyclonal
Clone ID	
Concentration	1 mg/mL
Conjugation	Unconjugated
Purification	The antibody was affinity-purified from rabbit anti-serum by affinity-chromatography.
Dilution Range	WB 1:500-1:2000 IF 1:200-1:1000 ELISA 1:5000
Formulation	PBS, 50% Glycerol, 0.5% BSA and 0.02% Sodium Azide.
Isotype	IgG
Storage Instruction	Store at 20°C for up to 1 year from the date of receipt, and avoid repeat freeze-thaw cycles.

TARGET INFORMATION

Gene ID	3762
Gene Symbol	KCNJ5
Uniprot ID	KCNJ5_HUMAN
Immunogen Region	The antiserum was produced against synthesized peptide derived from human KCNJ5 at amino acid range 370-419
Immunogen Region	340-420 C-Term
Specificity	KCNJ5 polyclonal antibody (G Protein-Activated Inward Rectifier Potassium Channel 4) binds to endogenous G Protein-Activated Inward Rectifier Potassium Channel 4 at the amino acid region 340-420 C-Term.
Immunogen Sequence	



Western blot analysis of lysates from HeLa cells, using KCNJ5 Antibody. The lane on the right is blocked with the synthesized peptide.



Immunofluorescence analysis of A549 cells, using KCNJ5 Antibody. The picture on the right is blocked with the synthesized peptide.