

Anti-KCNJ9 antibody (30-110 Internal) (STJ93841)

STJ93841

GENERAL INFORMATION

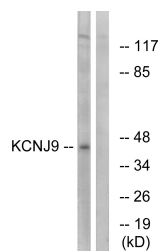
Product Type	Primary antibodies
Short Description	Rabbit polyclonal antibody anti-G Protein-Activated Inward Rectifier Potassium Channel 3 (30-110 Internal) is suitable for use in Western Blot, Immunohistochemistry, Immunofluorescence and ELISA research applications.
Applications	WB, IHC-P, IF-P, ELISA
Host/Source	Rabbit
Reactivity	Human, Mouse, Rat

PRODUCT PROPERTIES

Clonality	Polyclonal
Clone ID	
Concentration	1 mg/mL
Conjugation	Unconjugated
Purification	The antibody was affinity-purified from rabbit anti-serum by affinity-chromatography.
Dilution Range	WB 1:500-1:2000 IHC 1:100-1:300 ELISA 1:40000
Formulation	PBS, 50% Glycerol, 0.5% BSA and 0.02% Sodium Azide.
Isotype	IgG
Storage Instruction	Store at 20°C for up to 1 year from the date of receipt, and avoid repeat freeze-thaw cycles.

TARGET INFORMATION

Gene ID	3765
Gene Symbol	KCNJ9
Uniprot ID	KCNJ9_HUMAN
Immunogen Region	The antiserum was produced against synthesized peptide derived from human KCNJ9 at amino acid range 61-110 30-110 Internal
Specificity	KCNJ9 polyclonal antibody (G Protein-Activated Inward Rectifier Potassium Channel 3) binds to endogenous G Protein-Activated Inward Rectifier Potassium Channel 3 at the amino acid region 30-110 Internal.
Immunogen Sequence	



Western blot analysis of lysates from LOVO cells, using KCNJ9 Antibody. The lane on the right is blocked with the synthesized peptide.