

Anti-KCNJ4 antibody (220-300 Internal) (STJ93839)

STJ93839

GENERAL INFORMATION

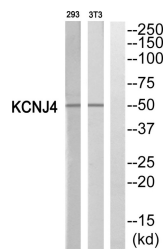
Product Type	Primary antibodies
Short Description	Rabbit polyclonal antibody anti-Inward Rectifier Potassium Channel 4 (220-300 Internal) is suitable for use in Western Blot and ELISA research applications.
Applications	WB, ELISA
Host/Source	Rabbit
Reactivity	Human, Mouse, Rat

PRODUCT PROPERTIES

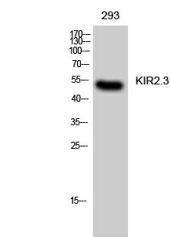
Clonality	Polyclonal
Clone ID	
Concentration	1 mg/mL
Conjugation	Unconjugated
Purification	The antibody was affinity-purified from rabbit anti-serum by affinity-chromatography.
Dilution Range	WB 1:500-1:2000 ELISA 1:40000
Formulation	PBS, 50% Glycerol, 0.5% BSA and 0.02% Sodium Azide.
Isotype	IgG
Storage Instruction	Store at -20°C for up to 1 year from the date of receipt, and avoid repeat freeze-thaw cycles.

TARGET INFORMATION

Gene ID	3761
Gene Symbol	KCNJ4
Uniprot ID	KCNJ4_HUMAN
Immunogen	The antiserum was produced against synthesized peptide derived from human KCNJ4 at amino acid range 251-300
Immunogen Region	220-300 Internal
Specificity	KCNJ4 polyclonal antibody (Inward Rectifier Potassium Channel 4) binds to endogenous Inward Rectifier Potassium Channel 4 at the amino acid region 220-300 Internal.
Immunogen Sequence	



Western blot analysis of KCNJ4 Antibody. The lane on the right is blocked with the KCNJ4 peptide.



Western blot analysis of 293 cells using KIR2.3 Polyclonal Antibody

This product is suitable for in-vitro studies under the RESEARCH USE ONLY [RUO] licence. This product must not be used as for diagnostic or other medical purposes.
St John's Laboratory Ltd, Knowledge Dock Business Centre, University Way, London, E16 2RD | Tel: 0208 223 3081