

Anti-KCNJ2 antibody (50-130 Internal) (STJ93838)

STJ93838

GENERAL INFORMATION

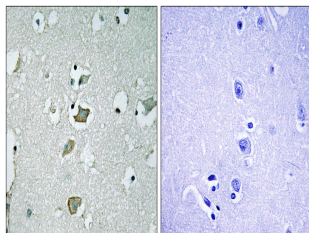
Product Type	Primary antibodies
Short Description	Rabbit polyclonal antibody anti-Inward Rectifier Potassium Channel 2 (50-130 Internal) is suitable for use in Western Blot, Immunohistochemistry, Immunofluorescence and ELISA research applications.
Applications	WB, IHC-P, IF-P, ELISA
Host/Source	Rabbit
Reactivity	Human, Rat

PRODUCT PROPERTIES

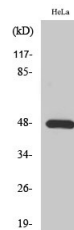
Clonality	Polyclonal
Clone ID	
Concentration	1 mg/mL
Conjugation	Unconjugated
Purification	The antibody was affinity-purified from rabbit anti-serum by affinity-chromatography.
Dilution Range	WB 1:500-1:2000 IHC 1:100-1:300 ELISA 1:10000
Formulation	PBS, 50% Glycerol, 0.5% BSA and 0.02% Sodium Azide.
Isotype	IgG
Storage Instruction	Store at 20°C for up to 1 year from the date of receipt, and avoid repeat freeze-thaw cycles.

TARGET INFORMATION

Gene ID	3759
Gene Symbol	KCNJ2
Uniprot ID	KCNJ2_HUMAN
Immunogen Region	The antiserum was produced against synthesized peptide derived from human KCNJ2 at amino acid range 81-130 50-130 Internal
Specificity	KCNJ2 polyclonal antibody (Inward Rectifier Potassium Channel 2) binds to endogenous Inward Rectifier Potassium Channel 2 at the amino acid region 50-130 Internal.
Immunogen Sequence	



Immunohistochemistry analysis of paraffin-embedded human brain tissue, using KCNJ2 Antibody. The picture on the right is blocked with the synthesized peptide.



Western blot analysis of various cells using KIR2.1 Polyclonal Antibody diluted at 1: 500

This product is suitable for in-vitro studies under the RESEARCH USE ONLY [RUO] licence. This product must not be used as for diagnostic or other medical purposes.
St John's Laboratory Ltd, Knowledge Dock Business Centre, University Way, London, E16 2RD | Tel: 0208 223 3081