

Anti-KIF4A antibody (1140-1220 C-Term) (STJ93837)

STJ93837

GENERAL INFORMATION

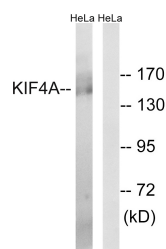
Product Type	Primary antibodies
Short Description	Rabbit polyclonal antibody anti-Chromosome-Associated Kinesin Kif4a (1140-1220 C-Term) is suitable for use in Western Blot and ELISA research applications.
Applications	WB, ELISA
Host/Source	Rabbit
Reactivity	Human, Rat, Mouse

PRODUCT PROPERTIES

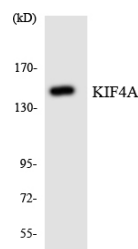
Clonality	Polyclonal
Clone ID	
Concentration	1 mg/mL
Conjugation	Unconjugated
Purification	The antibody was affinity-purified from rabbit anti-serum by affinity-chromatography.
Dilution Range	WB 1:500-1:2000 ELISA 1:40000
Formulation	PBS, 50% Glycerol, 0.5% BSA and 0.02% Sodium Azide.
Isotype	IgG
Storage	Store at -20°C for up to 1 year from the date of receipt, and avoid repeat freeze-thaw cycles.
Instruction	

TARGET INFORMATION

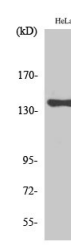
Gene ID	24137
Gene Symbol	KIF4A
Uniprot ID	KIF4A_HUMAN
Immunogen	The antiserum was produced against synthesized peptide derived from human KIF4A at amino acid range 1171-1220
Immunogen Region	1140-1220 C-Term
Specificity	KIF4A polyclonal antibody (Chromosome-Associated Kinesin Kif4a) binds to endogenous Chromosome-Associated Kinesin Kif4a at the amino acid region 1140-1220 C-Term.
Immunogen Sequence	



Western blot analysis of lysates from HeLa cells, using KIF4A Antibody. The lane on the right is blocked with the synthesized peptide.



Western blot analysis of the lysates from HeLa cells using KIF4A antibody.



Western blot analysis of various cells using KIF4A Polyclonal Antibody diluted at 1: 500

This product is suitable for in-vitro studies under the RESEARCH USE ONLY [RUO] licence. This product must not be used as for diagnostic or other medical purposes.
St John's Laboratory Ltd, Knowledge Dock Business Centre, University Way, London, E16 2RD | Tel: 0208 223 3081