

Anti-KIF2C antibody (30-110) (STJ93836)

STJ93836

GENERAL INFORMATION

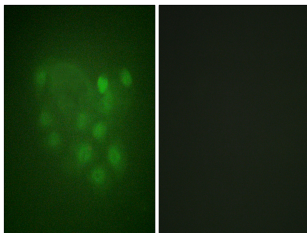
Product Type	Primary antibodies
Short Description	Rabbit polyclonal antibody anti-Kinesin-Like Protein Kif2c (30-110) is suitable for use in Immunofluorescence, Immunocytochemistry and ELISA research applications.
Applications	IF, ICC, ELISA
Host/Source	Rabbit
Reactivity	Human, Mouse

PRODUCT PROPERTIES

Clonality	Polyclonal
Clone ID	
Concentration	1 mg/mL
Conjugation	Unconjugated
Purification	The antibody was affinity-purified from rabbit anti-serum by affinity-chromatography.
Dilution Range	IF 1:200-1:1000 ELISA 1:5000
Formulation	PBS, 50% Glycerol, 0.5% BSA and 0.02% Sodium Azide.
Isotype	IgG
Storage Instruction	Store at -20°C for up to 1 year from the date of receipt, and avoid repeat freeze-thaw cycles.

TARGET INFORMATION

Gene ID	11004
Gene Symbol	KIF2C
Uniprot ID	KIF2C_HUMAN
Immunogen	The antiserum was produced against synthesized peptide derived from human KIF2C at amino acid range 61-110
Immunogen Region	30-110
Specificity	KIF2C polyclonal antibody (Kinesin-Like Protein Kif2c) binds to endogenous Kinesin-Like Protein Kif2c at the amino acid region 30-110.
Immunogen Sequence	



Immunofluorescence analysis of A549 cells, using KIF2C Antibody. The picture on the right is blocked with the synthesized peptide.