

Anti-KIF13B antibody (80-160 N-Term) (STJ93834)

STJ93834

GENERAL INFORMATION

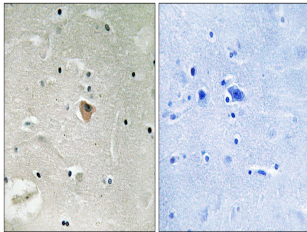
| | |
|--------------------------|--|
| Product Type | Primary antibodies |
| Short Description | Rabbit polyclonal antibody anti-Kinesin-Like Protein Kif13b (80-160 N-Term) is suitable for use in Western Blot, Immunohistochemistry, Immunofluorescence and ELISA research applications. |
| Applications | WB, IHC-P, IF-P, ELISA |
| Host/Source | Rabbit |
| Reactivity | Human, Rat, Mouse |

PRODUCT PROPERTIES

| | |
|----------------------------|--|
| Clonality | Polyclonal |
| Clone ID | |
| Concentration | 1 mg/mL |
| Conjugation | Unconjugated |
| Purification | The antibody was affinity-purified from rabbit anti-serum by affinity-chromatography. |
| Dilution Range | WB 1:500-1:2000 IHC 1:100-1:300 ELISA 1:5000 |
| Formulation | PBS, 50% Glycerol, 0.5% BSA and 0.02% Sodium Azide. |
| Isotype | IgG |
| Storage Instruction | Store at -20°C for up to 1 year from the date of receipt, and avoid repeat freeze-thaw cycles. |

TARGET INFORMATION

| | |
|---------------------------|--|
| Gene ID | 23303 |
| Gene Symbol | KIF13B |
| Uniprot ID | KI13B_HUMAN |
| Immunogen | The antiserum was produced against synthesized peptide derived from human KIF13B at amino acid range 111-160 |
| Immunogen Region | 80-160 N-Term |
| Specificity | KIF13B polyclonal antibody (Kinesin-Like Protein Kif13b) binds to endogenous Kinesin-Like Protein Kif13b at the amino acid region 80-160 N-Term. |
| Immunogen Sequence | |



Immunohistochemistry analysis of paraffin-embedded human brain, using KIF13B Antibody. The picture on the right is blocked with the synthesized peptide.