

Anti-KIAA0100 antibody (650-730 Internal) (STJ93833)

STJ93833

GENERAL INFORMATION

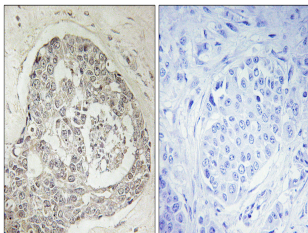
Product Type	Primary antibodies
Short Description	Rabbit polyclonal antibody anti-Protein Kiaa0100 (650-730 Internal) is suitable for use in Immunohistochemistry, Immunofluorescence, Immunocytochemistry and ELISA research applications.
Applications	IHC-P, IF, ICC, ELISA
Host/Source	Rabbit
Reactivity	Human, Rat, Mouse

PRODUCT PROPERTIES

Clonality	Polyclonal
Clone ID	
Concentration	1 mg/mL
Conjugation	Unconjugated
Purification	The antibody was affinity-purified from rabbit anti-serum by affinity-chromatography.
Dilution Range	IHC 1:100-1:300 IF 1:200-1:1000 ELISA 1:20000
Formulation	PBS, 50% Glycerol, 0.5% BSA and 0.02% Sodium Azide.
Isotype	IgG
Storage Instruction	Store at -20°C for up to 1 year from the date of receipt, and avoid repeat freeze-thaw cycles.

TARGET INFORMATION

Gene ID	9703
Gene Symbol	KIAA0100
Uniprot ID	K0100_HUMAN
Immunogen	The antiserum was produced against synthesized peptide derived from human KIAA0100 at amino acid range 681-730
Immunogen Region	650-730 Internal
Specificity	KIAA0100 polyclonal antibody (Protein Kiaa0100) binds to endogenous Protein Kiaa0100 at the amino acid region 650-730 Internal.
Immunogen Sequence	



Immunohistochemistry analysis of paraffin-embedded human breast carcinoma, using K0100 Antibody. The picture on the right is blocked with the synthesized peptide.