

Anti-KDEL2 antibody (50-130 Internal) (STJ93827)

STJ93827

GENERAL INFORMATION

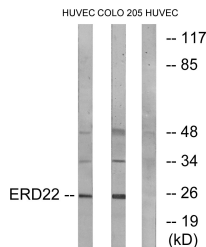
Product Type	Primary antibodies
Short Description	Rabbit polyclonal antibody anti-Er Lumen Protein-Retaining Receptor 2 (50-130 Internal) is suitable for use in Western Blot, Immunohistochemistry, Immunofluorescence, Immunocytochemistry and ELISA research applications.
Applications	WB, IHC-P, IF, ICC, ELISA
Host/Source	Rabbit
Reactivity	Human, Mouse, Rat

PRODUCT PROPERTIES

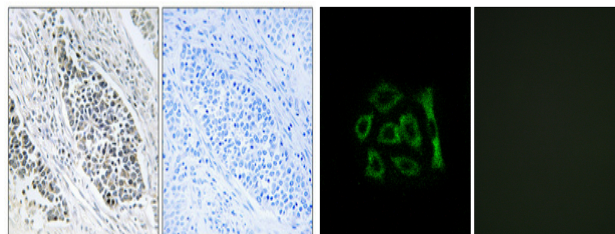
Clonality	Polyclonal
Clone ID	
Concentration	1 mg/mL
Conjugation	Unconjugated
Purification	The antibody was affinity-purified from rabbit anti-serum by affinity-chromatography.
Dilution Range	WB 1:500-1:2000 IHC 1:100-1:300 IF 1:200-1:1000 ELISA 1:20000
Formulation	PBS, 50% Glycerol, 0.5% BSA and 0.02% Sodium Azide.
Isotype	IgG
Storage Instruction	Store at -20°C for up to 1 year from the date of receipt, and avoid repeat freeze-thaw cycles.

TARGET INFORMATION

Gene ID	11014
Gene Symbol	KDEL2
Uniprot ID	ERD22_HUMAN
Immunogen	The antiserum was produced against synthesized peptide derived from human ERD22 at amino acid range 81-130
Immunogen Region	50-130 Internal
Specificity	KDEL2 polyclonal antibody (Er Lumen Protein-Retaining Receptor 2) binds to endogenous Er Lumen Protein-Retaining Receptor 2 at the amino acid region 50-130 Internal.
Immunogen Sequence	



Western blot analysis of lysates from HUVEC and COLO cells, using ERD22 Antibody. The lane on the right is blocked with the synthesized peptide.



Immunohistochemical analysis of paraffin-embedded Human lung cancer. Antibody was diluted at 1:100 (4°C overnight). High-pressure and temperature Tris-EDTA, pH8.0 was used for antigen retrieval. Negative control (right) obtained from antibody was pre-absorbed by immunogen peptide.

Immunofluorescence analysis of A549 cells, using ERD22 Antibody. The picture on the right is blocked with the synthesized peptide.



Western blot analysis of various cells using KDEL Receptor 2 Polyclonal Antibody diluted at 1: 1000

This product is suitable for in-vitro studies under the RESEARCH USE ONLY [RUO] licence. This product must not be used as for diagnostic or other medical purposes.
St John's Laboratory Ltd, Knowledge Dock Business Centre, University Way, London, E16 2RD | Tel: 0208 223 3081