

Anti-KCNT1 antibody (980-1060 C-Term) (STJ93826)

STJ93826

GENERAL INFORMATION

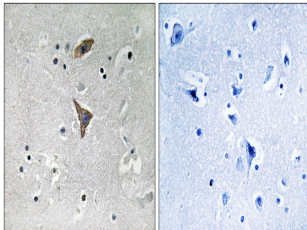
Product Type	Primary antibodies
Short Description	Rabbit polyclonal antibody anti-Potassium Channel Subfamily T Member 1 (980-1060 C-Term) is suitable for use in Western Blot, Immunohistochemistry, Immunofluorescence and ELISA research applications.
Applications	WB, IHC-P, IF-P, ELISA
Host/Source	Rabbit
Reactivity	Human, Mouse, Rat

PRODUCT PROPERTIES

Clonality	Polyclonal
Clone ID	
Concentration	1 mg/mL
Conjugation	Unconjugated
Purification	The antibody was affinity-purified from rabbit anti-serum by affinity-chromatography.
Dilution Range	WB 1:500-1:2000 IHC 1:100-1:300 ELISA 1:10000
Formulation	PBS, 50% Glycerol, 0.5% BSA and 0.02% Sodium Azide.
Isotype	IgG
Storage Instruction	Store at -20°C for up to 1 year from the date of receipt, and avoid repeat freeze-thaw cycles.

TARGET INFORMATION

Gene ID	57582
Gene Symbol	KCNT1
Uniprot ID	KCNT1_HUMAN
Immunogen	The antiserum was produced against synthesized peptide derived from human KCNT1 at amino acid range 1019-1068
Immunogen Region	980-1060 C-Term
Specificity	KCNT1 polyclonal antibody (Potassium Channel Subfamily T Member 1) binds to endogenous Potassium Channel Subfamily T Member 1 at the amino acid region 980-1060 C-Term.
Immunogen Sequence	



Immunohistochemistry analysis of paraffin-embedded human brain tissue, using KCNT1 Antibody. The picture on the right is blocked with the synthesized peptide.