

Anti-KCNQ5 antibody (610-690 Internal) (STJ93825)

STJ93825

GENERAL INFORMATION

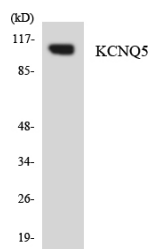
Product Type	Primary antibodies
Short Description	Rabbit polyclonal antibody anti-Potassium Voltage-Gated Channel Subfamily Kqt Member 5 (610-690 Internal) is suitable for use in Western Blot and ELISA research applications.
Applications	WB, ELISA
Host/Source	Rabbit
Reactivity	Human, Mouse

PRODUCT PROPERTIES

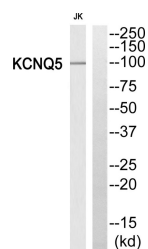
Clonality	Polyclonal
Clone ID	
Concentration	1 mg/mL
Conjugation	Unconjugated
Purification	The antibody was affinity-purified from rabbit anti-serum by affinity-chromatography.
Dilution	WB 1:500-1:2000
Range	ELISA 1:40000
Formulation	PBS, 50% Glycerol, 0.5% BSA and 0.02% Sodium Azide.
Isotype	IgG
Storage	Store at -20°C for up to 1 year from the date of receipt, and avoid repeat freeze-thaw cycles.
Instruction	

TARGET INFORMATION

Gene ID	56479
Gene Symbol	KCNQ5
Uniprot ID	KCNQ5_HUMAN
Immunogen	The antiserum was produced against synthesized peptide derived from human KCNQ5 at amino acid range 637-686
Immunogen Region	610-690 Internal
Specificity	KCNQ5 polyclonal antibody (Potassium Voltage-Gated Channel Subfamily Kqt Member 5) binds to endogenous Potassium Voltage-Gated Channel Subfamily Kqt Member 5 at the amino acid region 610-690 Internal.
Immunogen Sequence	



Western blot analysis of the lysates from COLO205 cells using KCNQ5 antibody.



Western blot analysis of KCNQ5 Antibody. The lane on the right is blocked with the KCNQ5 peptide.

This product is suitable for in-vitro studies under the RESEARCH USE ONLY [RUO] licence. This product must not be used as for diagnostic or other medical purposes.
 St John's Laboratory Ltd, Knowledge Dock Business Centre, University Way, London, E16 2RD | Tel: 0208 223 3081