

Anti-KCNQ2/3/4/5 antibody (160-240) (STJ93823)

STJ93823

GENERAL INFORMATION

Product Type	Primary antibodies
Short Description	Rabbit polyclonal antibody anti-Potassium voltage-gated channel subfamily KQT member 2 and Potassium voltage-gated channel subfamily KQT member 3 and Potassium voltage-gated channel subfamily KQT member 4 and Potassium voltage-gated channel subfamily
Applications	IHC-P, IF-P, ELISA
Host/Source	Rabbit
Reactivity	Human, Mouse, Rat

PRODUCT PROPERTIES

Clonality	Polyclonal
Clone ID	
Concentration	1 mg/mL
Conjugation	Unconjugated
Purification	The antibody was affinity-purified from rabbit anti-serum by affinity-chromatography.
Dilution Range	IHC 1:100-1:300 ELISA 1:10000
Formulation	PBS, 50% Glycerol, 0.5% BSA and 0.02% Sodium Azide.
Isotype	IgG
Storage Instruction	Store at -20°C for up to 1 year from the date of receipt, and avoid repeat freeze-thaw cycles.

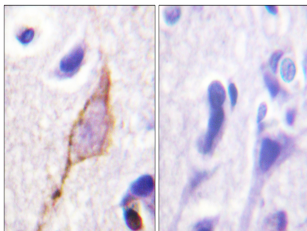
TARGET INFORMATION

Gene ID [56479](#)
[9132](#)
[3786](#)
[KCNQ5](#)
[KCNQ4](#)
[KCNQ5_HUMAN](#)
[KCNQ4_HUMAN](#)
[KCNQ3_HUMAN](#)

Immunogen The antiserum was produced against synthesized peptide derived from human Kv7.3/KCNQ3 at amino acid range 191-240
Immunogen Region 160-240

Specificity KCNQ2/3/4/5 polyclonal antibody (Potassium voltage-gated channel subfamily KQT member 2 and Potassium voltage-gated channel subfamily KQT member 3 and Potassium voltage-gated channel subfamily KQT member 4 and Potassium voltage-gated channel subfamily)

Immunogen Sequence



Immunohistochemistry analysis of paraffin-embedded human brain tissue, using Kv7.3/KCNQ3 Antibody. The picture on the right is blocked with the synthesized peptide.