

Anti-KCNG3 antibody (160-240 Internal) (STJ93820)

STJ93820

GENERAL INFORMATION

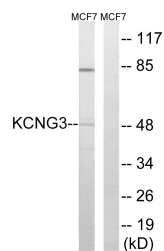
Product Type	Primary antibodies
Short Description	Rabbit polyclonal antibody anti-Potassium Voltage-Gated Channel Subfamily G Member 3 (160-240 Internal) is suitable for use in Western Blot and ELISA research applications.
Applications	WB, ELISA
Host/Source	Rabbit
Reactivity	Human, Mouse, Rat

PRODUCT PROPERTIES

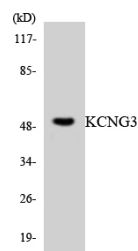
Clonality	Polyclonal
Clone ID	
Concentration	1 mg/mL
Conjugation	Unconjugated
Purification	The antibody was affinity-purified from rabbit anti-serum by affinity-chromatography.
Dilution	WB 1:500-1:2000
Range	ELISA 1:5000
Formulation	PBS, 50% Glycerol, 0.5% BSA and 0.02% Sodium Azide.
Isotype	IgG
Storage	Store at -20°C for up to 1 year from the date of receipt, and avoid repeat freeze-thaw cycles.
Instruction	

TARGET INFORMATION

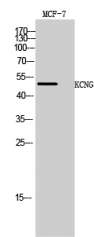
Gene ID	170850
Gene Symbol	KCNG3
Uniprot ID	KCNG3_HUMAN
Immunogen	The antiserum was produced against synthesized peptide derived from human KCNG3 at amino acid range 183-232
Immunogen Region	160-240 Internal
Specificity	KCNG3 polyclonal antibody (Potassium Voltage-Gated Channel Subfamily G Member 3) binds to endogenous Potassium Voltage-Gated Channel Subfamily G Member 3 at the amino acid region 160-240 Internal.
Immunogen Sequence	



Western blot analysis of lysates from MCF-7 cells, using KCNG3 Antibody. The lane on the right is blocked with the synthesized peptide.



Western blot analysis of the lysates from HeLa cells using KCNG3 antibody.



Western blot analysis of MCF-7 cells using KCNG3 Polyclonal Antibody