

Anti-KCNF1 antibody (160-240 Internal) (STJ93818)

STJ93818

GENERAL INFORMATION

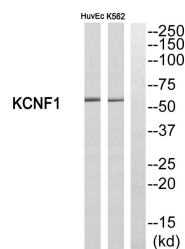
Product Type	Primary antibodies
Short Description	Rabbit polyclonal antibody anti-Potassium Voltage-Gated Channel Subfamily F Member 1 (160-240 Internal) is suitable for use in Western Blot and ELISA research applications.
Applications	WB, ELISA
Host/Source	Rabbit
Reactivity	Human, Mouse

PRODUCT PROPERTIES

Clonality	Polyclonal
Clone ID	
Concentration	1 mg/mL
Conjugation	Unconjugated
Purification	The antibody was affinity-purified from rabbit anti-serum by affinity-chromatography.
Dilution	WB 1:500-1:2000
Range	ELISA 1:5000
Formulation	PBS, 50% Glycerol, 0.5% BSA and 0.02% Sodium Azide.
Isotype	IgG
Storage	Store at -20°C for up to 1 year from the date of receipt, and avoid repeat freeze-thaw cycles.
Instruction	

TARGET INFORMATION

Gene ID	3754
Gene Symbol	KCNF1
Uniprot ID	KCNF1_HUMAN
Immunogen	The antiserum was produced against synthesized peptide derived from human KCNF1 at amino acid range 191-240
Immunogen Region	160-240 Internal
Specificity	KCNF1 polyclonal antibody (Potassium Voltage-Gated Channel Subfamily F Member 1) binds to endogenous Potassium Voltage-Gated Channel Subfamily F Member 1 at the amino acid region 160-240 Internal.
Immunogen Sequence	



Western blot analysis of KCNF1 Antibody. The lane on the right is blocked with the KCNF1 peptide.

This product is suitable for in-vitro studies under the RESEARCH USE ONLY [RUO] licence. This product must not be used as for diagnostic or other medical purposes.
 St John's Laboratory Ltd, Knowledge Dock Business Centre, University Way, London, E16 2RD | Tel: 0208 223 3081