

## Anti-SLC4A1AP antibody (390-470 Internal) (STJ93814)

STJ93814

### GENERAL INFORMATION

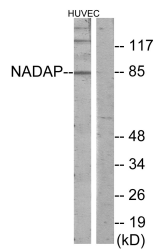
<b>Product Type</b>	Primary antibodies
<b>Short Description</b>	Rabbit polyclonal antibody anti-Kanadapтин (390-470 Internal) is suitable for use in Western Blot, Immunohistochemistry, Immunofluorescence, Immunocytochemistry and ELISA research applications.
<b>Applications</b>	WB, IHC-P, IF, ICC, ELISA
<b>Host/Source</b>	Rabbit
<b>Reactivity</b>	Human, Mouse

### PRODUCT PROPERTIES

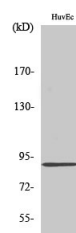
<b>Clonality</b>	Polyclonal
<b>Clone ID</b>	
<b>Concentration</b>	1 mg/mL
<b>Conjugation</b>	Unconjugated
<b>Purification</b>	The antibody was affinity-purified from rabbit anti-serum by affinity-chromatography.
<b>Dilution Range</b>	WB 1:500-1:2000 IHC 1:100-1:300 IF 1:200-1:1000 ELISA 1:10000
<b>Formulation</b>	PBS, 50% Glycerol, 0.5% BSA and 0.02% Sodium Azide.
<b>Isotype</b>	IgG
<b>Storage Instruction</b>	Store at -20°C for up to 1 year from the date of receipt, and avoid repeat freeze-thaw cycles.

### TARGET INFORMATION

<b>Gene ID</b>	22950
<b>Gene Symbol</b>	SLC4A1AP
<b>Uniprot ID</b>	NADAP_HUMAN
<b>Immunogen</b>	The antiserum was produced against synthesized peptide derived from human NADAP at amino acid range 421-470
<b>Immunogen Region</b>	390-470 Internal
<b>Specificity</b>	SLC4A1AP polyclonal antibody (Kanadapтин) binds to endogenous Kanadapтин at the amino acid region 390-470 Internal.
<b>Immunogen Sequence</b>	



Western blot analysis of lysates from HUVEC cells, using NADAP Antibody. The lane on the right is blocked with the synthesized peptide.



Western blot analysis of various cells using Kanadapтин Polyclonal Antibody diluted at 1: 2000