

Anti-MAPK10 antibody (330-410 C-Term) (STJ93808)

STJ93808

GENERAL INFORMATION

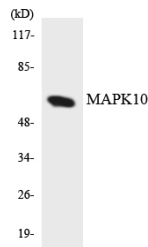
Product Type	Primary antibodies
Short Description	Rabbit polyclonal antibody anti-Mitogen-Activated Protein Kinase 10 (330-410 C-Term) is suitable for use in Western Blot, Immunohistochemistry, Immunofluorescence, Immunocytochemistry and ELISA research applications.
Applications	WB, IHC-P, IF, ICC, ELISA
Host/Source	Rabbit
Reactivity	Human, Mouse, Rat

PRODUCT PROPERTIES

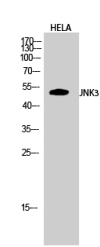
Clonality	Polyclonal
Clone ID	
Concentration	1 mg/mL
Conjugation	Unconjugated
Purification	The antibody was affinity-purified from rabbit anti-serum by affinity-chromatography.
Dilution Range	WB 1:500-1:2000 IHC 1:100-1:300 IF 1:200-1:1000 ELISA 1:20000
Formulation	PBS, 50% Glycerol, 0.5% BSA and 0.02% Sodium Azide.
Isotype	IgG
Storage Instruction	Store at -20°C for up to 1 year from the date of receipt, and avoid repeat freeze-thaw cycles.

TARGET INFORMATION

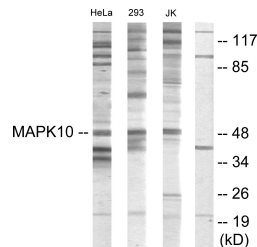
Gene ID	5602
Gene Symbol	MAPK10
Uniprot ID	MK10_HUMAN
Immunogen	The antiserum was produced against synthesized peptide derived from human MAPK10 at amino acid range 361-410
Immunogen Region	330-410 C-Term
Specificity	MAPK10 polyclonal antibody (Mitogen-Activated Protein Kinase 10) binds to endogenous Mitogen-Activated Protein Kinase 10 at the amino acid region 330-410 C-Term.
Immunogen Sequence	



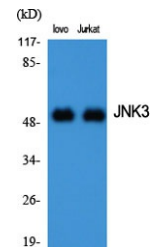
Western blot analysis of the lysates from HUVEC cells using MAPK10 antibody.



Western blot analysis of HELA cells using JNK3 Polyclonal Antibody diluted at 1: 2000



Western blot analysis of lysates from HeLa, 293, and Jurkat cells, using MAPK10 Antibody. The lane on the right is blocked with the synthesized peptide.



Western blot analysis of various cells using JNK3 Polyclonal Antibody diluted at 1: 2000

This product is suitable for in-vitro studies under the RESEARCH USE ONLY [RUO] licence. This product must not be used as for diagnostic or other medical purposes.
St John's Laboratory Ltd, Knowledge Dock Business Centre, University Way, London, E16 2RD | Tel: 0208 223 3081