

Anti-MAPK9 antibody (220-300 Internal) (STJ93807)

STJ93807

GENERAL INFORMATION

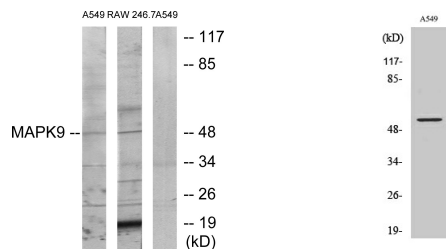
Product Type	Primary antibodies
Short Description	Rabbit polyclonal antibody anti-Mitogen-Activated Protein Kinase 9 (220-300 Internal) is suitable for use in Western Blot, Immunohistochemistry, Immunofluorescence and ELISA research applications.
Applications	WB, IHC-P, IF-P, ELISA
Host/Source	Rabbit
Reactivity	Human, Mouse, Rat

PRODUCT PROPERTIES

Clonality	Polyclonal
Clone ID	
Concentration	1 mg/mL
Conjugation	Unconjugated
Purification	The antibody was affinity-purified from rabbit anti-serum by affinity-chromatography.
Dilution Range	WB 1:500-1:2000 IHC 1:100-1:300 ELISA 1:10000
Formulation	PBS, 50% Glycerol, 0.5% BSA and 0.02% Sodium Azide.
Isotype	IgG
Storage Instruction	Store at -20°C for up to 1 year from the date of receipt, and avoid repeat freeze-thaw cycles.

TARGET INFORMATION

Gene ID	5601
Gene Symbol	MAPK9
Uniprot ID	MK09_HUMAN
Immunogen	The antiserum was produced against synthesized peptide derived from human MAPK9 at amino acid range 246-295
Immunogen Region	220-300 Internal
Specificity	MAPK9 polyclonal antibody (Mitogen-Activated Protein Kinase 9) binds to endogenous Mitogen-Activated Protein Kinase 9 at the amino acid region 220-300 Internal.
Immunogen Sequence	



Western blot analysis of lysates from A549 and RAW264.7 cells, using MAPK9 Antibody. The lane on the right is blocked with the synthesized peptide.

Western blot analysis of various cells using JNK2 Polyclonal Antibody

This product is suitable for in-vitro studies under the RESEARCH USE ONLY [RUO] licence. This product must not be used as for diagnostic or other medical purposes.
St John's Laboratory Ltd, Knowledge Dock Business Centre, University Way, London, E16 2RD | Tel: 0208 223 3081