

Anti-JNK1/2/3 antibody (120-200) (STJ93805)

STJ93805

GENERAL INFORMATION

Product Type	Primary antibodies
Short Description	Rabbit polyclonal antibody anti-Mitogen-activated protein kinase 8 and Mitogen-activated protein kinase 9 and Mitogen-activated protein kinase 10 (120-200) is suitable for use in Western Blot, Immunohistochemistry, Immunofluorescence, Immunocytochemistry
Applications	WB, IHC-P, IF, ICC, ELISA
Host/Source	Rabbit
Reactivity	Human, Mouse, Rat, Chicken

PRODUCT PROPERTIES

Clonality	Polyclonal
Clone ID	
Concentration	1 mg/mL
Conjugation	Unconjugated
Purification	The antibody was affinity-purified from rabbit anti-serum by affinity-chromatography.
Dilution Range	WB 1:500-1:2000 IHC 1:100-1:300 IF 1:200-1:1000 ELISA 1:10000
Formulation	PBS, 50% Glycerol, 0.5% BSA and 0.02% Sodium Azide.
Isotype	IgG
Storage Instruction	Store at -20°C for up to 1 year from the date of receipt, and avoid repeat freeze-thaw cycles.

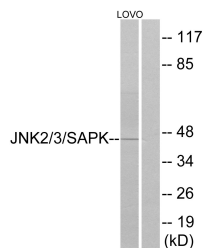
TARGET INFORMATION

Gene ID [5601](#)
[5602](#)
[5599](#)
[MAPK9](#)
[MAPK10](#)
[MK09_HUMAN](#)
[MK10_HUMAN](#)
[MK08_HUMAN](#)
[<](#)

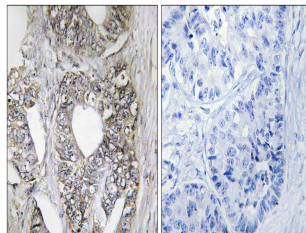
Immunogen The antiserum was produced against synthesized peptide derived from human SAPK/JNK at amino acid range 166-215
Immunogen Region 120-200

Specificity JNK1/2/3 polyclonal antibody (Mitogen-activated protein kinase 8 and Mitogen-activated protein kinase 9 and Mitogen-activated protein kinase 10) binds to endogenous Mitogen-activated protein kinase 8 and Mitogen-activated protein kinase 9 and Mitogen-activated protein kinase 10

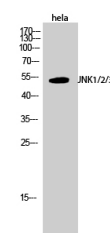
Immunogen Sequence



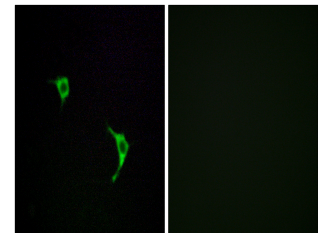
Western blot analysis of lysates from LOVO cells, using SAPK/JNK Antibody. The lane on the right is blocked with the synthesized peptide.



Immunohistochemistry analysis of paraffin-embedded human breast carcinoma tissue, using SAPK/JNK Antibody. The picture on the right is blocked with the synthesized peptide.



Western blot analysis of HeLa cells using JNK1/2/3 Polyclonal Antibody diluted at 1:1000



Immunofluorescence analysis of LOVO cells, using SAPK/JNK Antibody. The picture on the right is blocked with the synthesized peptide.