

Anti-JMY antibody (900-980 C-Term) (STJ93803)

STJ93803

GENERAL INFORMATION

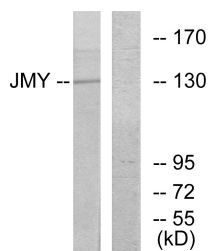
Product Type	Primary antibodies
Short Description	Rabbit polyclonal antibody anti-Junction-Mediating And-Regulatory Protein (900-980 C-Term) is suitable for use in Western Blot and ELISA research applications.
Applications	WB, ELISA
Host/Source	Rabbit
Reactivity	Human, Mouse

PRODUCT PROPERTIES

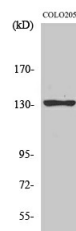
Clonality	Polyclonal
Clone ID	
Concentration	1 mg/mL
Conjugation	Unconjugated
Purification	The antibody was affinity-purified from rabbit anti-serum by affinity-chromatography.
Dilution Range	WB 1:500-1:2000 ELISA 1:5000
Formulation	PBS, 50% Glycerol, 0.5% BSA and 0.02% Sodium Azide.
Isotype	IgG
Storage Instruction	Store at -20°C for up to 1 year from the date of receipt, and avoid repeat freeze-thaw cycles.

TARGET INFORMATION

Gene ID	133746
Gene Symbol	JMY
Uniprot ID	JMY_HUMAN
Immunogen	The antiserum was produced against synthesized peptide derived from human JMY at amino acid range 931-980
Immunogen Region	900-980 C-Term
Specificity	JMY polyclonal antibody (Junction-Mediating And-Regulatory Protein) binds to endogenous Junction-Mediating And-Regulatory Protein at the amino acid region 900-980 C-Term.
Immunogen Sequence	



Western blot analysis of lysates from COLO cells, using JMY Antibody. The lane on the right is blocked with the synthesized peptide.



Western blot analysis of various cells using JMY Polyclonal Antibody

This product is suitable for in-vitro studies under the RESEARCH USE ONLY [RUO] licence. This product must not be used as for diagnostic or other medical purposes.
St John's Laboratory Ltd, Knowledge Dock Business Centre, University Way, London, E16 2RD | Tel: 0208 223 3081