

Anti-MAPK8IP3 antibody (590-670 Internal) (STJ93801)

STJ93801

GENERAL INFORMATION

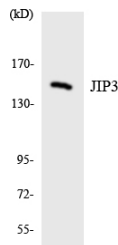
Product Type	Primary antibodies
Short Description	Rabbit polyclonal antibody anti-C-Jun-Amino-Terminal Kinase-Interacting Protein 3 (590-670 Internal) is suitable for use in Western Blot, Immunohistochemistry, Immunofluorescence, Immunocytochemistry and ELISA research applications.
Applications	WB, IHC-P, IF, ICC, ELISA
Host/Source	Rabbit
Reactivity	Human, Mouse

PRODUCT PROPERTIES

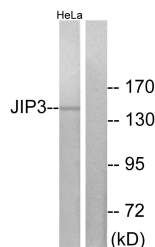
Clonality	Polyclonal
Clone ID	
Concentration	1 mg/mL
Conjugation	Unconjugated
Purification	The antibody was affinity-purified from rabbit anti-serum by affinity-chromatography.
Dilution Range	WB 1:500-1:2000 IHC 1:100-1:300 IF 1:200-1:1000 ELISA 1:20000
Formulation	PBS, 50% Glycerol, 0.5% BSA and 0.02% Sodium Azide.
Isotype	IgG
Storage Instruction	Store at -20°C for up to 1 year from the date of receipt, and avoid repeat freeze-thaw cycles.

TARGET INFORMATION

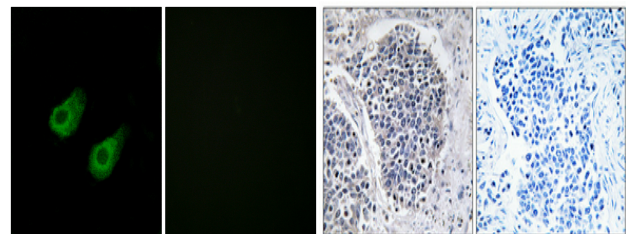
Gene ID	23162
Gene Symbol	MAPK8IP3
Uniprot ID	JIP3_HUMAN
Immunogen	The antiserum was produced against synthesized peptide derived from human JIP3 at amino acid range 621-670
Immunogen Region	590-670 Internal
Specificity	MAPK8IP3 polyclonal antibody (C-Jun-Amino-Terminal Kinase-Interacting Protein 3) binds to endogenous C-Jun-Amino-Terminal Kinase-Interacting Protein 3 at the amino acid region 590-670 Internal.
Immunogen Sequence	



Western blot analysis of the lysates from HepG2 cells using JIP3 antibody.



Western blot analysis of lysates from HeLa cells, using JIP3 Antibody. The lane on the right is blocked with the synthesized peptide.



Immunofluorescence analysis of HeLa cells, using JIP3 Antibody. The picture on the right is blocked with the synthesized peptide. Immunohistochemical analysis of paraffin-embedded Human lung cancer. Antibody was diluted at 1:100 (4°C overnight). High-pressure and temperature Tris-EDTA, pH8.0 was used for antigen retrieval. Negative control (right) obtained from antibody was pre-absorbed by immunogen peptide.

This product is suitable for in-vitro studies under the RESEARCH USE ONLY [RUO] licence. This product must not be used as for diagnostic or other medical purposes.
St John's Laboratory Ltd, Knowledge Dock Business Centre, University Way, London, E16 2RD | Tel: 0208 223 3081