

Anti-MAPK8IP2 antibody (550-630 C-Term) (STJ93800)

STJ93800

GENERAL INFORMATION

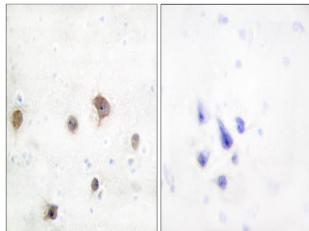
| | |
|--------------------------|--|
| Product Type | Primary antibodies |
| Short Description | Rabbit polyclonal antibody anti-C-Jun-Amino-Terminal Kinase-Interacting Protein 2 (550-630 C-Term) is suitable for use in Western Blot, Immunohistochemistry, Immunofluorescence, Immunocytochemistry and ELISA research applications. |
| Applications | WB, IHC-P, IF, ICC, ELISA |
| Host/Source | Rabbit |
| Reactivity | Human, Mouse, Rat |

PRODUCT PROPERTIES

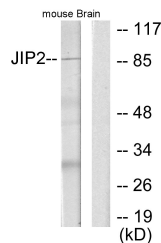
| | |
|----------------------------|--|
| Clonality | Polyclonal |
| Clone ID | |
| Concentration | 1 mg/mL |
| Conjugation | Unconjugated |
| Purification | The antibody was affinity-purified from rabbit anti-serum by affinity-chromatography. |
| Dilution Range | WB 1:500-1:2000 IHC 1:100-1:300 IF 1:200-1:1000 ELISA 1:20000 |
| Formulation | PBS, 50% Glycerol, 0.5% BSA and 0.02% Sodium Azide. |
| Isotype | IgG |
| Storage Instruction | Store at -20°C for up to 1 year from the date of receipt, and avoid repeat freeze-thaw cycles. |

TARGET INFORMATION

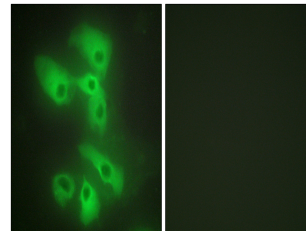
| | |
|---------------------------|---|
| Gene ID | 23542 |
| Gene Symbol | MAPK8IP2 |
| Uniprot ID | JIP2_HUMAN |
| Immunogen | The antiserum was produced against synthesized peptide derived from human JIP2 at amino acid range 581-630 |
| Immunogen Region | 550-630 C-Term |
| Specificity | MAPK8IP2 polyclonal antibody (C-Jun-Amino-Terminal Kinase-Interacting Protein 2) binds to endogenous C-Jun-Amino-Terminal Kinase-Interacting Protein 2 at the amino acid region 550-630 C-Term. |
| Immunogen Sequence | |



Immunohistochemistry analysis of paraffin-embedded human brain tissue, using JIP2 Antibody. The picture on the right is blocked with the synthesized peptide.



Western blot analysis of lysates from mouse brain, using JIP2 Antibody. The lane on the right is blocked with the synthesized peptide.



Immunofluorescence analysis of HeLa cells, using JIP2 Antibody. The picture on the right is blocked with the synthesized peptide.

This product is suitable for in-vitro studies under the RESEARCH USE ONLY [RUO] licence. This product must not be used as for diagnostic or other medical purposes.
St John's Laboratory Ltd, Knowledge Dock Business Centre, University Way, London, E16 2RD | Tel: 0208 223 3081