

Anti-MAPK8IP1 antibody (40-120) (STJ93799)

STJ93799

GENERAL INFORMATION

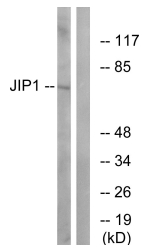
Product Type	Primary antibodies
Short Description	Rabbit polyclonal antibody anti-C-Jun-Amino-Terminal Kinase-Interacting Protein 1 (40-120) is suitable for use in Western Blot, Immunohistochemistry, Immunofluorescence, Immunocytochemistry and ELISA research applications.
Applications	WB, IHC-P, IF, ICC, ELISA
Host/Source	Rabbit
Reactivity	Human, Mouse, Rat

PRODUCT PROPERTIES

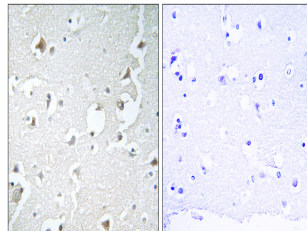
Clonality	Polyclonal
Clone ID	
Concentration	1 mg/mL
Conjugation	Unconjugated
Purification	The antibody was affinity-purified from rabbit anti-serum by affinity-chromatography.
Dilution Range	WB 1:500-1:2000 IHC 1:100-1:300 IF 1:200-1:1000 ELISA 1:5000
Formulation	PBS, 50% Glycerol, 0.5% BSA and 0.02% Sodium Azide.
Isotype	IgG
Storage Instruction	Store at -20°C for up to 1 year from the date of receipt, and avoid repeat freeze-thaw cycles.

TARGET INFORMATION

Gene ID	9479
Gene Symbol	MAPK8IP1
Uniprot ID	JIP1_HUMAN
Immunogen	The antiserum was produced against synthesized peptide derived from human JIP1 at amino acid range 69-118
Immunogen Region	40-120
Specificity	MAPK8IP1 polyclonal antibody (C-Jun-Amino-Terminal Kinase-Interacting Protein 1) binds to endogenous C-Jun-Amino-Terminal Kinase-Interacting Protein 1 at the amino acid region 40-120.
Immunogen Sequence	



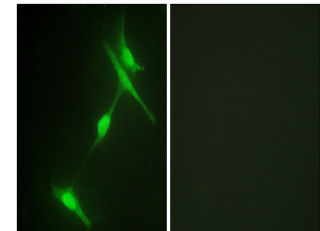
Western blot analysis of lysates from COLO205 cells, treated with Serum 20% 15', using JIP1 Antibody. The lane on the right is blocked with the synthesized peptide.



Immunohistochemistry analysis of paraffin-embedded human brain tissue, using JIP1 Antibody. The picture on the right is blocked with the synthesized peptide.



Western blot analysis of COLO205 cells using JIP-1 Polyclonal Antibody



Immunofluorescence analysis of NIH/3T3 cells, using JIP1 Antibody. The picture on the right is blocked with the synthesized peptide.

This product is suitable for in-vitro studies under the RESEARCH USE ONLY [RUO] licence. This product must not be used as for diagnostic or other medical purposes.
St John's Laboratory Ltd, Knowledge Dock Business Centre, University Way, London, E16 2RD | Tel: 0208 223 3081