

Anti-JDP2 antibody (90-170) (STJ93797)

STJ93797

GENERAL INFORMATION

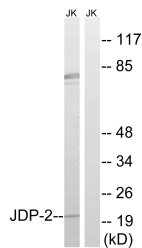
Product Type	Primary antibodies
Short Description	Rabbit polyclonal antibody anti-Jun Dimerization Protein 2 (90-170) is suitable for use in Western Blot and ELISA research applications.
Applications	WB, ELISA
Host/Source	Rabbit
Reactivity	Human, Mouse, Rat

PRODUCT PROPERTIES

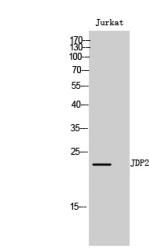
Clonality	Polyclonal
Clone ID	
Concentration	1 mg/mL
Conjugation	Unconjugated
Purification	The antibody was affinity-purified from rabbit anti-serum by affinity-chromatography.
Dilution Range	WB 1:500-1:2000 ELISA 1:10000
Formulation	PBS, 50% Glycerol, 0.5% BSA and 0.02% Sodium Azide.
Isotype	IgG
Storage Instruction	Store at -20°C for up to 1 year from the date of receipt, and avoid repeat freeze-thaw cycles.

TARGET INFORMATION

Gene ID	122953
Gene Symbol	JDP2
Uniprot ID	JDP2_HUMAN
Immunogen	The antiserum was produced against synthesized peptide derived from human JDP2 at amino acid range 114-163
Immunogen Region	90-170
Specificity	JDP2 polyclonal antibody (Jun Dimerization Protein 2) binds to endogenous Jun Dimerization Protein 2 at the amino acid region 90-170.
Immunogen Sequence	



Western blot analysis of lysates from Jurkat cells, using JDP-2 Antibody. The lane on the right is blocked with the synthesized peptide.



Western blot analysis of Jurkat cells using JDP2 Polyclonal Antibody

This product is suitable for in-vitro studies under the RESEARCH USE ONLY [RUO] licence. This product must not be used as for diagnostic or other medical purposes.
St John's Laboratory Ltd, Knowledge Dock Business Centre, University Way, London, E16 2RD | Tel: 0208 223 3081