

Anti-NFKBIB antibody (1-80) (STJ93786)

STJ93786

GENERAL INFORMATION

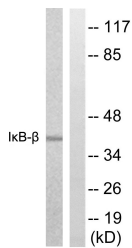
Product Type	Primary antibodies
Short Description	Rabbit polyclonal antibody anti-Nf-Kappa-B Inhibitor Beta (1-80) is suitable for use in Western Blot and ELISA research applications.
Applications	WB, ELISA
Host/Source	Rabbit
Reactivity	Human, Mouse

PRODUCT PROPERTIES

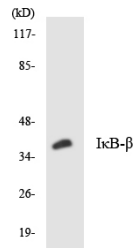
Clonality	Polyclonal
Clone ID	
Concentration	1 mg/mL
Conjugation	Unconjugated
Purification	The antibody was affinity-purified from rabbit anti-serum by affinity-chromatography.
Dilution Range	WB 1:500-1:2000 ELISA 1:5000
Formulation	PBS, 50% Glycerol, 0.5% BSA and 0.02% Sodium Azide.
Isotype	IgG
Storage Instruction	Store at -20°C for up to 1 year from the date of receipt, and avoid repeat freeze-thaw cycles.

TARGET INFORMATION

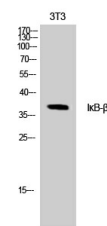
Gene ID	4793
Gene Symbol	NFKBIB
Uniprot ID	IKBB_HUMAN
Immunogen	The antiserum was produced against synthesized peptide derived from human I kappa B-beta at amino acid range 4-53
Immunogen Region	1-80
Specificity	NFKBIB polyclonal antibody (Nf-Kappa-B Inhibitor Beta) binds to endogenous Nf-Kappa-B Inhibitor Beta at the amino acid region 1-80.
Immunogen Sequence	



Western blot analysis of lysates from NIH/3T3 cells, treated with TNF 20ng/ml 30', using I kappa B-beta Antibody. The lane on the right is blocked with the synthesized peptide.



Western blot analysis of the lysates from HT-29 cells using I Kappa B-Beta antibody.



Western blot analysis of NIH-3T3 cells using I Kappa B-Beta Polyclonal Antibody

This product is suitable for in-vitro studies under the RESEARCH USE ONLY [RUO] licence. This product must not be used as for diagnostic or other medical purposes.
St John's Laboratory Ltd, Knowledge Dock Business Centre, University Way, London, E16 2RD | Tel: 0208 223 3081