

Anti-ITPK1 antibody (50-130 Internal) (STJ93781)

STJ93781

GENERAL INFORMATION

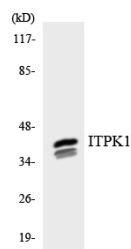
Product Type	Primary antibodies
Short Description	Rabbit polyclonal antibody anti-Inositol-Tetrakisphosphate 1-Kinase (50-130 Internal) is suitable for use in Western Blot and ELISA research applications.
Applications	WB, ELISA
Host/Source	Rabbit
Reactivity	Human, Mouse

PRODUCT PROPERTIES

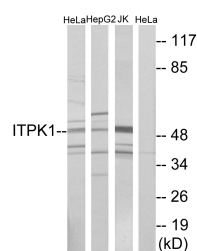
Clonality	Polyclonal
Clone ID	
Concentration	1 mg/mL
Conjugation	Unconjugated
Purification	The antibody was affinity-purified from rabbit anti-serum by affinity-chromatography.
Dilution Range	WB 1:500-1:2000 ELISA 1:10000
Formulation	PBS, 50% Glycerol, 0.5% BSA and 0.02% Sodium Azide.
Isotype	IgG
Storage Instruction	Store at -20°C for up to 1 year from the date of receipt, and avoid repeat freeze-thaw cycles.

TARGET INFORMATION

Gene ID	3705
Gene Symbol	ITPK1
Uniprot ID	ITPK1_HUMAN
Immunogen	The antiserum was produced against synthesized peptide derived from human ITPK1 at amino acid range 81-130
Immunogen Region	50-130 Internal
Specificity	ITPK1 polyclonal antibody (Inositol-Tetrakisphosphate 1-Kinase) binds to endogenous Inositol-Tetrakisphosphate 1-Kinase at the amino acid region 50-130 Internal.
Immunogen Sequence	



Western blot analysis of the lysates from HepG2 cells using ITPK1 antibody.



Western blot analysis of lysates from HeLa, HepG2, and Jurkat cells, using ITPK1 Antibody. The lane on the right is blocked with the synthesized peptide.