

Anti-IRX1 antibody (190-270 Internal) (STJ93777)

STJ93777

GENERAL INFORMATION

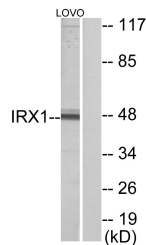
Product Type	Primary antibodies
Short Description	Rabbit polyclonal antibody anti-Iroquois-Class Homeodomain Protein Irx-1 (190-270 Internal) is suitable for use in Western Blot, Immunohistochemistry, Immunofluorescence, Immunocytochemistry and ELISA research applications.
Applications	WB, IHC-P, IF, ICC, ELISA
Host/Source	Rabbit
Reactivity	Human, Mouse

PRODUCT PROPERTIES

Clonality	Polyclonal
Clone ID	
Concentration	1 mg/mL
Conjugation	Unconjugated
Purification	The antibody was affinity-purified from rabbit anti-serum by affinity-chromatography.
Dilution Range	WB 1:500-1:2000 IHC 1:100-1:300 IF 1:200-1:1000 ELISA 1:40000
Formulation	PBS, 50% Glycerol, 0.5% BSA and 0.02% Sodium Azide.
Isotype	IgG
Storage Instruction	Store at -20°C for up to 1 year from the date of receipt, and avoid repeat freeze-thaw cycles.

TARGET INFORMATION

Gene ID	79192
Gene Symbol	IRX1
Uniprot ID	IRX1_HUMAN
Immunogen	The antiserum was produced against synthesized peptide derived from human IRX1 at amino acid range 221-270
Immunogen Region	190-270 Internal
Specificity	IRX1 polyclonal antibody (Iroquois-Class Homeodomain Protein Irx-1) binds to endogenous Iroquois-Class Homeodomain Protein Irx-1 at the amino acid region 190-270 Internal.
Immunogen Sequence	



Western blot analysis of lysates from LOVO cells, using IRX1 Antibody. The lane on the right is blocked with the synthesized peptide.