

Anti-IRS1 antibody (250-330) (STJ93773)

STJ93773

GENERAL INFORMATION

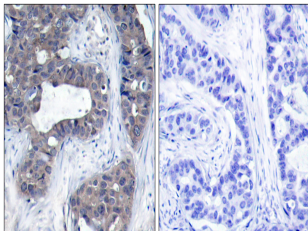
Product Type	Primary antibodies
Short Description	Rabbit polyclonal antibody anti-Insulin Receptor Substrate 1 (250-330) is suitable for use in Immunohistochemistry, Immunofluorescence, Immunocytochemistry, Western Blot and ELISA research applications.
Applications	IHC-P, IF, ICC, WB, ELISA
Host/Source	Rabbit
Reactivity	Human, Mouse, Rat

PRODUCT PROPERTIES

Clonality	Polyclonal
Clone ID	
Concentration	1 mg/mL
Conjugation	Unconjugated
Purification	The antibody was affinity-purified from rabbit anti-serum by affinity-chromatography.
Dilution Range	WB 1:500-2000 IHC 1:100-1:300 IF 1:200-1:1000 ELISA 1:20000
Formulation	PBS, 50% Glycerol, 0.5% BSA and 0.02% Sodium Azide.
Isotype	IgG
Storage Instruction	Store at -20°C for up to 1 year from the date of receipt, and avoid repeat freeze-thaw cycles.

TARGET INFORMATION

Gene ID	3667
Gene Symbol	IRS1
Uniprot ID	IRS1_HUMAN
Immunogen	The antiserum was produced against synthesized peptide derived from human IRS-1 at amino acid range 274-323
Immunogen Region	250-330
Specificity	IRS1 polyclonal antibody (Insulin Receptor Substrate 1) binds to endogenous Insulin Receptor Substrate 1 at the amino acid region 250-330.
Immunogen Sequence	



Immunohistochemistry analysis of paraffin-embedded human breast carcinoma tissue, using IRS-1 Antibody. The picture on the right is blocked with the synthesized peptide.

This product is suitable for in-vitro studies under the RESEARCH USE ONLY [RUO] licence. This product must not be used as for diagnostic or other medical purposes.
St John's Laboratory Ltd, Knowledge Dock Business Centre, University Way, London, E16 2RD | Tel: 0208 223 3081