

Anti-IRF4 antibody (250-330 Internal) (STJ93764)

STJ93764

GENERAL INFORMATION

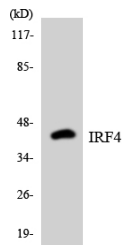
Product Type	Primary antibodies
Short Description	Rabbit polyclonal antibody anti-Interferon Regulatory Factor 4 (250-330 Internal) is suitable for use in Western Blot, Immunohistochemistry, Immunofluorescence, Immunocytochemistry and ELISA research applications.
Applications	WB, IHC-P, IF, ICC, ELISA
Host/Source	Rabbit
Reactivity	Human, Mouse

PRODUCT PROPERTIES

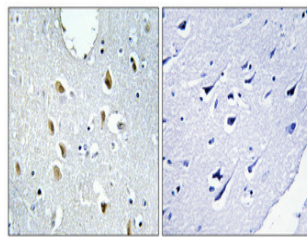
Clonality	Polyclonal
Clone ID	
Concentration	1 mg/mL
Conjugation	Unconjugated
Purification	The antibody was affinity-purified from rabbit anti-serum by affinity-chromatography.
Dilution Range	WB 1:500-1:2000 IHC 1:100-1:300 IF 1:200-1:1000 ELISA 1:20000
Formulation	PBS, 50% Glycerol, 0.5% BSA and 0.02% Sodium Azide.
Isotype	IgG
Storage Instruction	Store at -20°C for up to 1 year from the date of receipt, and avoid repeat freeze-thaw cycles.

TARGET INFORMATION

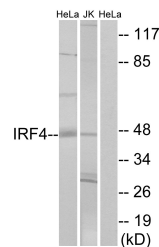
Gene ID	3662
Gene Symbol	IRF4
Uniprot ID	IRF4_HUMAN
Immunogen	The antiserum was produced against synthesized peptide derived from human IRF4 at amino acid range 281-330
Immunogen Region	250-330 Internal
Specificity	IRF4 polyclonal antibody (Interferon Regulatory Factor 4) binds to endogenous Interferon Regulatory Factor 4 at the amino acid region 250-330 Internal.
Immunogen Sequence	



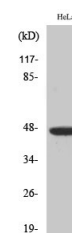
Western blot analysis of the lysates from HT-29 cells using IRF4 antibody.



Immunohistochemical analysis of paraffin-embedded Human brain. Antibody was diluted at 1:100 (4°C overnight). High-pressure and temperature Tris-EDTA, pH8.0 was used for antigen retrieval. Negative control (right) obtained from antibody was pre-absorbed by immunogen peptide.



Western blot analysis of lysates from HeLa and Jurkat cells, using IRF4 Antibody. The lane on the right is blocked with the synthesized peptide.



Western blot analysis of various cells using IRF-4 Polyclonal Antibody