

Anti-IRF2 antibody (70-150 Internal) (STJ93760)

STJ93760

GENERAL INFORMATION

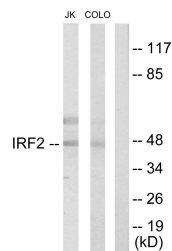
Product Type	Primary antibodies
Short Description	Rabbit polyclonal antibody anti-Interferon Regulatory Factor 2 (70-150 Internal) is suitable for use in Western Blot, Immunohistochemistry, Immunofluorescence and ELISA research applications.
Applications	WB, IHC-P, IF-P, ELISA
Host/Source	Rabbit
Reactivity	Human, Mouse, Rat

PRODUCT PROPERTIES

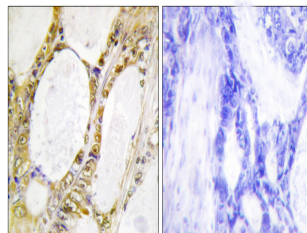
Clonality	Polyclonal
Clone ID	
Concentration	1 mg/mL
Conjugation	Unconjugated
Purification	The antibody was affinity-purified from rabbit anti-serum by affinity-chromatography.
Dilution Range	WB 1:500-1:2000 IHC 1:100-1:300 ELISA 1:20000
Formulation	PBS, 50% Glycerol, 0.5% BSA and 0.02% Sodium Azide.
Isotype	IgG
Storage Instruction	Store at -20°C for up to 1 year from the date of receipt, and avoid repeat freeze-thaw cycles.

TARGET INFORMATION

Gene ID	3660
Gene Symbol	IRF2
Uniprot ID	IRF2_HUMAN
Immunogen	The antiserum was produced against synthesized peptide derived from human IRF2 at amino acid range 101-150
Immunogen Region	70-150 Internal
Specificity	IRF2 polyclonal antibody (Interferon Regulatory Factor 2) binds to endogenous Interferon Regulatory Factor 2 at the amino acid region 70-150 Internal.
Immunogen Sequence	



Western blot analysis of lysates from Jurkat and COLO205 cells, using IRF2 Antibody. The lane on the right is blocked with the synthesized peptide.



Immunohistochemistry analysis of paraffin-embedded human colon carcinoma tissue, using IRF2 Antibody. The picture on the right is blocked with the synthesized peptide.