

Anti-IQGAP1 antibody (220-300 N-Term) (STJ93752)

STJ93752

GENERAL INFORMATION

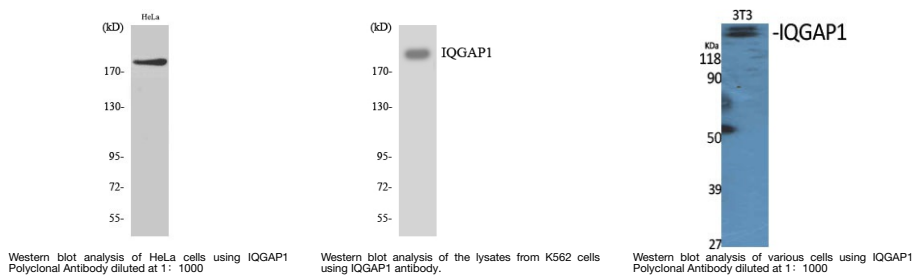
Product Type	Primary antibodies
Short Description	Rabbit polyclonal antibody anti-Ras Gtpase-Activating-Like Protein Iqgap1 (220-300 N-Term) is suitable for use in Western Blot and ELISA research applications.
Applications	WB, ELISA
Host/Source	Rabbit
Reactivity	Human, Mouse

PRODUCT PROPERTIES

Clonality	Polyclonal
Clone ID	
Concentration	1 mg/mL
Conjugation	Unconjugated
Purification	The antibody was affinity-purified from rabbit anti-serum by affinity-chromatography.
Dilution Range	WB 1:500-1:2000 ELISA 1:20000
Formulation	PBS, 50% Glycerol, 0.5% BSA and 0.02% Sodium Azide.
Isotype	IgG
Storage Instruction	Store at -20°C for up to 1 year from the date of receipt, and avoid repeat freeze-thaw cycles.

TARGET INFORMATION

Gene ID	8826
Gene Symbol	IQGAP1
Uniprot ID	IQGA1_HUMAN
Immunogen	The antiserum was produced against synthesized peptide derived from human IQGAP1 at amino acid range 247-296
Immunogen Region	220-300 N-Term
Specificity	IQGAP1 polyclonal antibody (Ras Gtpase-Activating-Like Protein Iqgap1) binds to endogenous Ras Gtpase-Activating-Like Protein Iqgap1 at the amino acid region 220-300 N-Term.
Immunogen Sequence	



This product is suitable for in-vitro studies under the RESEARCH USE ONLY [RUO] licence. This product must not be used as for diagnostic or other medical purposes.
 St John's Laboratory Ltd, Knowledge Dock Business Centre, University Way, London, E16 2RD | Tel: 0208 223 3081