

Anti-IPMK antibody (280-360 C-Term) (STJ93749)

STJ93749

GENERAL INFORMATION

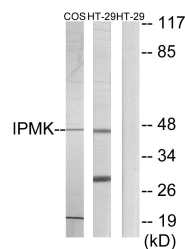
Product Type	Primary antibodies
Short Description	Rabbit polyclonal antibody anti-Inositol Polyphosphate Multikinase (280-360 C-Term) is suitable for use in Western Blot, Immunohistochemistry, Immunofluorescence and ELISA research applications.
Applications	WB, IHC-P, IF-P, ELISA
Host/Source	Rabbit
Reactivity	Human, Mouse, Rat, Monkey

PRODUCT PROPERTIES

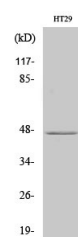
Clonality	Polyclonal
Clone ID	
Concentration	1 mg/mL
Conjugation	Unconjugated
Purification	The antibody was affinity-purified from rabbit anti-serum by affinity-chromatography.
Dilution Range	WB 1:500-1:2000 IHC 1:100-1:300 ELISA 1:40000
Formulation	PBS, 50% Glycerol, 0.5% BSA and 0.02% Sodium Azide.
Isotype	IgG
Storage Instruction	Store at -20°C for up to 1 year from the date of receipt, and avoid repeat freeze-thaw cycles.

TARGET INFORMATION

Gene ID	253430
Gene Symbol	IPMK
Uniprot ID	IPMK_HUMAN
Immunogen	The antiserum was produced against synthesized peptide derived from human IPMK at amino acid range 311-360
Immunogen Region	280-360 C-Term
Specificity	IPMK polyclonal antibody (Inositol Polyphosphate Multikinase) binds to endogenous Inositol Polyphosphate Multikinase at the amino acid region 280-360 C-Term.
Immunogen Sequence	



Western blot analysis of lysates from HT-29 and COS7 cells, using IPMK Antibody. The lane on the right is blocked with the synthesized peptide.



Western blot analysis of various cells using IPMK Polyclonal Antibody cells nucleus extracted by Minute™ Cytoplasmic and Nuclear Fractionation kit (SC-003, Inventibiotech, MN, USA).

This product is suitable for in-vitro studies under the RESEARCH USE ONLY [RUO] licence. This product must not be used as for diagnostic or other medical purposes.
St John's Laboratory Ltd, Knowledge Dock Business Centre, University Way, London, E16 2RD | Tel: 0208 223 3081