

Anti-PNPLA8 antibody (660-740 C-Term) (STJ93748)

STJ93748

GENERAL INFORMATION

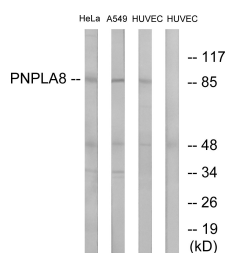
Product Type	Primary antibodies
Short Description	Rabbit polyclonal antibody anti-Calcium-Independent Phospholipase A2-Gamma (660-740 C-Term) is suitable for use in Western Blot and ELISA research applications.
Applications	WB, ELISA
Host/Source	Rabbit
Reactivity	Human, Mouse

PRODUCT PROPERTIES

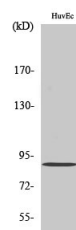
Clonality	Polyclonal
Clone ID	
Concentration	1 mg/mL
Conjugation	Unconjugated
Purification	The antibody was affinity-purified from rabbit anti-serum by affinity-chromatography.
Dilution Range	WB 1:500-1:2000 ELISA 1:40000
Formulation	PBS, 50% Glycerol, 0.5% BSA and 0.02% Sodium Azide.
Isotype	IgG
Storage	Store at -20°C for up to 1 year from the date of receipt, and avoid repeat freeze-thaw cycles.
Instruction	

TARGET INFORMATION

Gene ID	50640
Gene Symbol	PNPLA8
Uniprot ID	PLPL8_HUMAN
Immunogen	The antiserum was produced against synthesized peptide derived from human PNPLA8 at amino acid range 691-740
Immunogen Region	660-740 C-Term
Specificity	PNPLA8 polyclonal antibody (Calcium-Independent Phospholipase A2-Gamma) binds to endogenous Calcium-Independent Phospholipase A2-Gamma at the amino acid region 660-740 C-Term.
Immunogen Sequence	



Western blot analysis of lysates from HUVEC, HeLa, and A549 cells, using PNPLA8 Antibody. The lane on the right is blocked with the synthesized peptide.



Western blot analysis of various cells using iPLA2 Gamma Polyclonal Antibody diluted at 1: 2000

This product is suitable for in-vitro studies under the RESEARCH USE ONLY [RUO] licence. This product must not be used as for diagnostic or other medical purposes.
St John's Laboratory Ltd, Knowledge Dock Business Centre, University Way, London, E16 2RD | Tel: 0208 223 3081