

Anti-CILK1 antibody (100-180) (STJ93740)

STJ93740

GENERAL INFORMATION

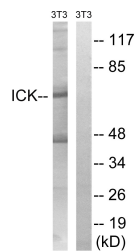
Product Type	Primary antibodies
Short Description	Rabbit polyclonal antibody anti-Serine/Threonine-Protein Kinase Ick (100-180) is suitable for use in Western Blot, Immunohistochemistry, Immunofluorescence and ELISA research applications.
Applications	WB, IHC-P, IF-P, ELISA
Host/Source	Rabbit
Reactivity	Human, Mouse, Rat

PRODUCT PROPERTIES

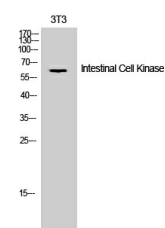
Clonality	Polyclonal
Clone ID	
Concentration	1 mg/mL
Conjugation	Unconjugated
Purification	The antibody was affinity-purified from rabbit anti-serum by affinity-chromatography.
Dilution Range	WB 1:500-1:2000 IHC 1:100-1:300 ELISA 1:20000
Formulation	PBS, 50% Glycerol, 0.5% BSA and 0.02% Sodium Azide.
Isotype	IgG
Storage Instruction	Store at -20°C for up to 1 year from the date of receipt, and avoid repeat freeze-thaw cycles.

TARGET INFORMATION

Gene ID	22858
Gene Symbol	CILK1
Uniprot ID	CILK1_HUMAN
Immunogen	The antiserum was produced against synthesized peptide derived from human ICK at amino acid range 125-174
Immunogen Region	100-180
Specificity	CILK1 polyclonal antibody (Serine/Threonine-Protein Kinase Ick) binds to endogenous Serine/Threonine-Protein Kinase Ick at the amino acid region 100-180.
Immunogen Sequence	



Western blot analysis of lysates from NIH/3T3 cells, treated with PBS 10 μ M 60', using ICK Antibody. The lane on the right is blocked with the synthesized peptide.



Western blot analysis of 3T3 cells using Intestinal Cell Kinase Polyclonal Antibody

This product is suitable for in-vitro studies under the RESEARCH USE ONLY [RUO] licence. This product must not be used as for diagnostic or other medical purposes.
St John's Laboratory Ltd, Knowledge Dock Business Centre, University Way, London, E16 2RD | Tel: 0208 223 3081