

Anti-ITGB5 antibody (690-770 C-Term) (STJ93738)

STJ93738

GENERAL INFORMATION

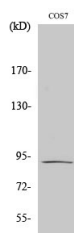
Product Type	Primary antibodies
Short Description	Rabbit polyclonal antibody anti-Integrin Beta-5 (690-770 C-Term) is suitable for use in Western Blot and ELISA research applications.
Applications	WB, ELISA
Host/Source	Rabbit
Reactivity	Human, Mouse, Rat, Monkey

PRODUCT PROPERTIES

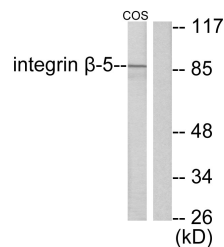
Clonality	Polyclonal
Clone ID	
Concentration	1 mg/mL
Conjugation	Unconjugated
Purification	The antibody was affinity-purified from rabbit anti-serum by affinity-chromatography.
Dilution Range	WB 1:500-1:2000 ELISA 1:20000
Formulation	PBS, 50% Glycerol, 0.5% BSA and 0.02% Sodium Azide.
Isotype	IgG
Storage Instruction	Store at -20°C for up to 1 year from the date of receipt, and avoid repeat freeze-thaw cycles.

TARGET INFORMATION

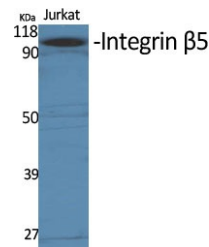
Gene ID	3693
Gene Symbol	ITGB5
Uniprot ID	ITB5_HUMAN
Immunogen	The antiserum was produced against synthesized peptide derived from human Integrin beta5 at amino acid range 721-770
Immunogen Region	690-770 C-Term
Specificity	ITGB5 polyclonal antibody (Integrin Beta-5) binds to endogenous Integrin Beta-5 at the amino acid region 690-770 C-Term.
Immunogen Sequence	



Western blot analysis of COS7 cells using Integrin Beta 5 Polyclonal Antibody diluted at 1: 1000



Western blot analysis of lysates from COS7 cells, using Integrin beta5 Antibody. The lane on the right is blocked with the synthesized peptide.



Western blot analysis of various cells using Integrin Beta 5 Polyclonal Antibody diluted at 1: 1000

This product is suitable for in-vitro studies under the RESEARCH USE ONLY [RUO] licence. This product must not be used as for diagnostic or other medical purposes.
St John's Laboratory Ltd, Knowledge Dock Business Centre, University Way, London, E16 2RD | Tel: 0208 223 3081