

Anti-ITGB4 antibody (1450-1530) (STJ93737)

STJ93737

GENERAL INFORMATION

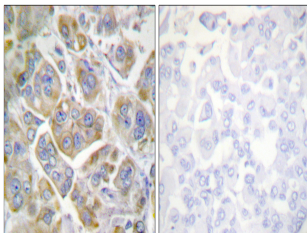
Product Type	Primary antibodies
Short Description	Rabbit polyclonal antibody anti-Integrin Beta-4 (1450-1530) is suitable for use in Western Blot, Immunohistochemistry, Immunofluorescence and ELISA research applications.
Applications	WB, IHC-P, IF-P, ELISA
Host/Source	Rabbit
Reactivity	Human, Mouse, Rat

PRODUCT PROPERTIES

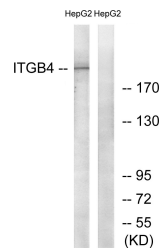
Clonality	Polyclonal
Clone ID	
Concentration	1 mg/mL
Conjugation	Unconjugated
Purification	The antibody was affinity-purified from rabbit anti-serum by affinity-chromatography.
Dilution Range	WB 1:500-1:2000 IHC 1:100-1:300 ELISA 1:20000
Formulation	PBS, 50% Glycerol, 0.5% BSA and 0.02% Sodium Azide.
Isotype	IgG
Storage Instruction	Store at -20°C for up to 1 year from the date of receipt, and avoid repeat freeze-thaw cycles.

TARGET INFORMATION

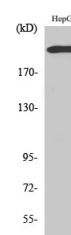
Gene ID	3691
Gene Symbol	ITGB4
Uniprot ID	ITB4_HUMAN
Immunogen	The antiserum was produced against synthesized peptide derived from human Integrin beta4 at amino acid range 1481-1530
Immunogen Region	1450-1530
Specificity	ITGB4 polyclonal antibody (Integrin Beta-4) binds to endogenous Integrin Beta-4 at the amino acid region 1450-1530.
Immunogen Sequence	



Immunohistochemistry analysis of paraffin-embedded human breast carcinoma tissue, using Integrin beta4 Antibody. The picture on the right is blocked with the synthesized peptide.



Western blot analysis of lysates from HepG2 cells, treated with PMA 125ng/ml 30', using Integrin beta4 Antibody. The lane on the right is blocked with the synthesized peptide.



Western blot analysis of various cells using Integrin Beta 4 Polyclonal Antibody

This product is suitable for in-vitro studies under the RESEARCH USE ONLY [RUO] licence. This product must not be used as for diagnostic or other medical purposes.
St John's Laboratory Ltd, Knowledge Dock Business Centre, University Way, London, E16 2RD | Tel: 0208 223 3081