

Anti-ITGB2 antibody (690-770) (STJ93734)

STJ93734

GENERAL INFORMATION

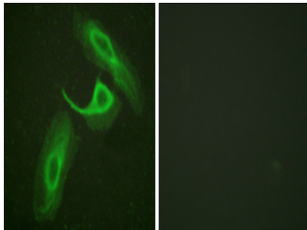
Product Type	Primary antibodies
Short Description	Rabbit polyclonal antibody anti-Integrin Beta-2 (690-770) is suitable for use in Immunofluorescence, Immunocytochemistry and ELISA research applications.
Applications	IF, ICC, ELISA
Host/Source	Rabbit
Reactivity	Human, Mouse, Rat

PRODUCT PROPERTIES

Clonality	Polyclonal
Clone ID	
Concentration	1 mg/mL
Conjugation	Unconjugated
Purification	The antibody was affinity-purified from rabbit anti-serum by affinity-chromatography.
Dilution Range	IF 1:200-1:1000 ELISA 1:5000
Formulation	PBS, 50% Glycerol, 0.5% BSA and 0.02% Sodium Azide.
Isotype	IgG
Storage	Store at -20°C for up to 1 year from the date of receipt, and avoid repeat freeze-thaw cycles.
Instruction	

TARGET INFORMATION

Gene ID	3689
Gene Symbol	ITGB2
Uniprot ID	ITB2_HUMAN
Immunogen	The antiserum was produced against synthesized peptide derived from human CD18/ITGB2 at amino acid range 720-769
Immunogen Region	690-770
Specificity	ITGB2 polyclonal antibody (Integrin Beta-2) binds to endogenous Integrin Beta-2 at the amino acid region 690-770.
Immunogen Sequence	



Immunofluorescence analysis of HeLa cells, using CD18/ITGB2 Antibody. The picture on the right is blocked with the synthesized peptide.