

Anti-INSR antibody (1300-1380) (STJ93725)

STJ93725

GENERAL INFORMATION

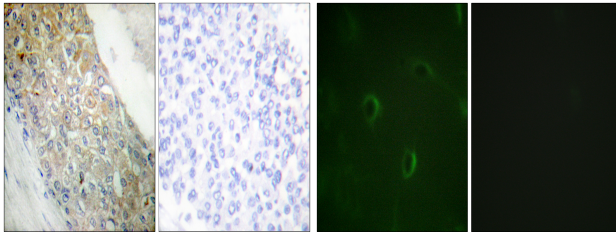
Product Type	Primary antibodies
Short Description	Rabbit polyclonal antibody anti-Insulin Receptor (1300-1380) is suitable for use in Immunohistochemistry, Immunofluorescence, Immunocytochemistry, Western Blot and ELISA research applications.
Applications	IHC-P, IF, ICC, WB, ELISA
Host/Source	Rabbit
Reactivity	Human, Rat, Mouse

PRODUCT PROPERTIES

Clonality	Polyclonal
Clone ID	
Concentration	1 mg/mL
Conjugation	Unconjugated
Purification	The antibody was affinity-purified from rabbit anti-serum by affinity-chromatography.
Dilution Range	WB 1:500-2000 IHC 1:100-1:300 IF 1:200-1:1000 ELISA 1:5000
Formulation	PBS, 50% Glycerol, 0.5% BSA and 0.02% Sodium Azide.
Isotype	IgG
Storage Instruction	Store at -20°C for up to 1 year from the date of receipt, and avoid repeat freeze-thaw cycles.

TARGET INFORMATION

Gene ID	3643
Gene Symbol	INSR
Uniprot ID	INSR_HUMAN
Immunogen	The antiserum was produced against synthesized peptide derived from human IR at amino acid range 1326-1375
Immunogen Region	1300-1380
Specificity	INSR polyclonal antibody (Insulin Receptor) binds to endogenous Insulin Receptor at the amino acid region 1300-1380.
Immunogen Sequence	



Immunohistochemistry analysis of paraffin-embedded human breast carcinoma tissue, using IR Antibody. The picture on the right is blocked with the synthesized peptide.

Immunofluorescence analysis of HUVEC cells, using IR Antibody. The picture on the right is blocked with the synthesized peptide.